

Carolina SPORTSMAN[®]



NOVEMBER 2022

TIMING THE RUT

OLD STYLE WATERFOWLING

SMALL GAME TROPHIES

GIANT GATORS

ANCHOR FOR BLUES

REDS ALL AROUND

HURRICANE HOG

\$2.99 NOVEMBER 2022



CarolinaSPORTSMAN.com



X XPRESS BAY SERIES

THE ORIGINAL ALL-WELDED ALUMINUM



X-BAY & X-BAY LOUNGE
X23B LOUNGE / X23B LOUNGE DUAL
X23B / X21B



HYPER-LIFT BAY
H24B / H22B / H20B



HYPER-LIFT HI90 BAY
H190B

**#1 SELLING 20'
ALUMINUM BAY BOAT**

WHETHER THIN WATER OR ROUGH SEAS, THE XPRESS BAY SERIES IS THE SOLUTION!

Xpress Bay Boats are one of the most popular lines of center console boats on the market today! According to statistical data, our H20 Bay is the #1 selling 20-foot aluminum bay boat. This achievement speaks to the quality construction and high level of performance that you will find in every all-welded, all-aluminum boat we construct. Built on the foundation of our Hyper-Lift Hull, these boats pack performance, fishability, and comfort into one amazingly cost-effective solution. Xpress Boats maintains the highest resale value in the market due to its attention to detail, innovative design, and unibody construction. Whether this is your first bay boat or making the jump over from glass, Xpress Bay Boats will satisfy the need! Visit us online at xpressboats.com or contact your local authorized dealer for more information.



xpress boats®
we build excitement

199 Extrusion Place, Hot Springs, AR 71901



xpressboats.com



WANT TO HEAR THOSE DEER WALKING AGAIN?

Don't let that trophy get away because you couldn't hear it.

The world's first waterproof rechargeable hearing aid from

PHONAK

 **DOWN EAST**
hearing care associates

See page 8 for more services we offer!



Products We Trust



KNIGHTDALE: (919) 500-7455
ROCKY MOUNT: (252) 378-2018
DOWNEASTHEARINGCARE.COM





PUBLISHER
Jonathan Menard

MANAGING EDITOR
Brian Cope, brian@carolinasportsman.com

ASSISTANT PRODUCTION MANAGER
Desiree P. Lewis

ART DIRECTOR
Kevin Orgeron

GRAPHIC DESIGNERS
Jeff Cashio, Alissa Zeringue

DIGITAL MARKETING DIRECTOR
Anna Gourgues

SUBSCRIPTION MANAGER
Theresa Peltier

CONTROLLER
Juanita Guidry

NC ADVERTISING SALES REP
Bradley Hulin
336-688-0273, bradleyh@carolinasportsman.com

SC ADVERTISING SALES REP
Stephen Loper
919-522-8667, stevel@carolinasportsman.com

ADVERTISING SALES
Asa Faulkner, Burton Angelle,
and Mark Hilzlim (National Sales)

CIRCULATION DIRECTOR
Mitch Eby 919.602.3862, mitchebync@gmail.com

Volume 29 | Number 11 | November 2022

FEATURES:

- 16 MAKE THE MOST OF THE RUT**
Big bucks let down their guard during breeding season.
> By Terry Madewell
- 28 OUT-FOXING CAROLINA FOX SQUIRRELS**
Here's how to hunt the trophy of all small game.
> By Mike Marsh
- 36 WATERFOWL HUNTING THE OLD WAY**
NC hunter uses old-school methods on ducks.
> By Craig Holt
- 46 LOWCOUNTRY BULLS AND PUPS**
Here's how to catch fall redfish, big and small.
> By Phillip Gentry
- 58 ANCHOR DOWN FOR CHILLY WATER BLUES**
Stay put for prime catfish action.
> By Terry Madewell

COLUMNS:

- 22 GREENER PASTURES**
By Jeff Burleson
- 24 COOKING ON THE WILD SIDE** By Capt. Jerry Dilsaver
- 26 STICKS & STRINGS**
By Sammy Romano
- 34 ALL DOGS GO TO HEAVEN**
By Pat Robertson
- 52 SOUND & SEA** By Chris Burrows
- 54 SMALL CRAFT ADVISORY**
By Phillip Gentry
- 64 SANTEE STRINGER**
By Terry Madewell
- 70 LUNKER LINES** By David Fritts

DEPARTMENTS:

- 42** Sportsman Showcase
- 74** Hunting/Fishing Scrapbook
- 78** NC/SC Hunting Regulations
- 82** Astro Tables
- 82** Advertiser Index

OUTDOOR UPDATE:

- 6 SOMETHING FOR EVERYONE, SC GATOR HIGHLIGHTS, BLUE LAND CRABS, PLUS MUCH MORE**

ON THE COVER:

Austin Taylor killed this 16-point buck in Rockingham County, NC on Sept. 14. INSET: Lori Shaffer shot this wild hog on Sept. 27 in Allendale County, SC.



Carolina Sportsman is published monthly by
CAROLINA PUBLISHING INC.

FOUNDER
Allen J. Lottinger

PRESIDENT
Lisa Lottinger Cuccia

CAROLINA SPORTSMAN (USPS #012969) is mailed at periodicals postage rates and paid at Boutte, La., and additional mailing offices. **POSTMASTER:** Send address changes to Carolina Sportsman, PO Box 1199, Boutte, LA 70039-1199. All rights reserved. Reproduction of contents is strictly prohibited without permission of Carolina Sportsman. **EDITORIAL** information and guidelines can be obtained by emailing Brian Cope at brian@carolinasportsman.com.

ADVERTISING INQUIRIES:
advertising@CarolinaSportsman.com
985.758.7217

FOR SUBSCRIPTIONS OR SUBSCRIPTION ISSUES, CALL 1.800.538.4355
Monday thru Thursday, 8 am to 4:30 pm
or email subscriptions@lasmag.com

14236 Highway 90
P.O. Box 1199, Boutte, LA 70039-1199
800.538.4355

Volume 29 | No 11



2022 NEW DEALER OF THE YEAR



POWERED BY



YAMAHA

417 LIZARD CREEK RD • LITTLETON, NC
(252) 586-8686 • LAKEGASTONJETSKI.COM

www.CarolinaSportsman.com



November 2022 | Carolina Sportsman

OUTDOOR UPDATE

with **Brian Cope**

Mat Craddock and family members killed this 12-foot, 9-inch, 652-pound gator in the Cooper River.



Brian Cope of Borden S.C., is the editor of *Carolina Sportsman Magazine* and *CarolinaSportsman.com*. You can reach him at brianc@sportsmannetwork.com.

SOMETHING FOR EVERYONE

OUTDOOR OPPORTUNITIES ARE PLENTY IN NOVEMBER

For outdoorsmen, November just might be the perfect month, or as close to it as possible. Almost everything we want to hunt is open, except for turkey season, but hey, we've got to save something for spring.

Numerous birds, waterfowl, small game, deer. And even bear season is still open in certain parts of North Carolina this month.

for bream, but if you've never fished for them in deep holes this time of year, you don't know what you're missing.

Catfish, stripers, bass and crappie will bite like mad this month, frisky with cooler weather and feeding up for the even colder weather they sense is coming. Speckled trout and redfish, among others, will keep saltwater anglers casting and reeling, feeling those same sentiments.

One of the best parts about being outdoors this month is that usually, it's not too hot and not too cold. Bugs are also much less of a problem, and the weather is perfect for cooking (outdoors, of course) the bounty of our pursuits. ■



Lori Shaffer shot this 254-pound wild hog in Allendale County on Sept. 27, 2022 just as Hurricane Ian was about to hit SC's lowcountry.

The bulk of the deer rut takes place this month in most of the Carolinas, according to wild-life biologists. So trophy bucks are making daytime appearances in front of hunters, giving many of them their best shot at getting that buck-of-a-lifetime.

Hunters looking for lots of action will find plenty of it this month in the form of squirrels

jumping through trees, invading bait piles intended for deer, and dashing along forest floors before scurrying up trees and out of sight. It's tough to beat an autumn walk through the woods, but doing it with a .22 rifle in hand looking for tree rats makes it even better.

And the fishing is as good as it gets, except maybe

Bag-A-Buck Contest underway



Don't forget to post photos of your bucks in the Carolina Sportsman Bag-A-Buck Contest to be eligible to win monthly prizes and the grand prize package.

To enter or see deer that have been entered, log onto www.carolinasportsman.com/bag-a-buck

SC GATOR SEASON HIGHLIGHTS

South Carolina's 2022 gator season continued the state's yearly trend of seeing big water lizards harvested.

Daniel Cunningham of Laurens County and his friends killed a 13-foot, 4-inch Santee beast on Sept. 10 while hunting out of Harry's Fish Camp.

The crew of Cunningham, Michael Wilson, Rick Jones, Houston Motes and Russell Iusti battled a thunderstorm as well as the big gator. Jones even sustained an eye injury when a bone fragment from the gator's skull hit him just after Cunningham shot the gator.

778-POUND GATOR

Jeremia Thibeault, visiting from Pennsylvania with his brother Jim came to Santee looking for a 13+ footer, and found it while hunting with renowned local hunters Hunter Neeley and Crick Hooker.

Upon arriving from the Keystone State after a 12-hour drive, they spent the next 10 hours on the water, passing on at least one gator that measured more than 11 feet in length.

"My brother questioned my sanity. But I told him and Hunter that I would rather burn the tag than settle for a gator that didn't stand out as exceptional," said Thibeault.



Daniel Cunningham and friends killed this 13-foot, 4-inch gator at Santee.



The 13-foot, 1-inch gator put up a valiant fight.

They finally found a 13-foot, 1-inch gator that they were able to subdue after a pretty eventful fight.

It weighed 778 pounds and was one in a long list of trophy gators taken by numerous outdoorsmen that have hunted with Neeley and Hooker over the years.

PEE DEE RIVER 10+FOOTER

Family members John Wayne Caulder, Kelly Wayne Caulder and Alan Caulder, all of Marion County, S.C. teamed up to kill a

10.6-foot gator on the Great Pee Dee River on Sept. 11.

They spent the first day of the season on the nearby Waccamaw River, coming up empty-handed.

"We'd scouted on the Waccamaw previously, and had spotted a few worth pursuing before the season started. But that day, we never got a shot at any of them. The Pee Dee River is basically our backyard, so we stayed closer to home on Day 2 and found the big boy," said John Wayne Caulder.

It was the fourth gator Caulder has killed over the years. All have measured longer than 10 feet. ■



Kelly Wayne Caulder with the 10.6-foot Pee Dee gator.

The trap loan program is aimed at helping landowners get rid of as many wild hogs as possible.

TRAP THOSE SWINE

The NCWRC, in conjunction with the N.C. Dept. of Agriculture and Consumer Services, is helping landowners remove invasive pigs from their land. This is part of a nationwide effort, loaning swine traps through August 2023.

The program is currently available in five N.C. counties - Anson, Davie, Haywood, Montgomery and Randolph.

Qualifying landowners can borrow the high-tech traps for up to one month. Each trap includes a remote trigger system, allowing operators to monitor them on their smartphones in real time, closing the gate once the entire group of pigs is inside.

Landowners incur no cost for the traps, but must bait and monitor them, and dispose of all pigs captured according to law, which prohibits releasing or transporting feral swine alive.

According to NCWRC, feral swine can be found throughout North Carolina in isolated areas. These nuisance animals cause widespread damage to crops and other wildlife. They are prolific breeders, and hunting has very little impact on their populations.

To apply for the trap loan program, visit ncferalswine.org. ■



OPEN SEASON

It is legal to hunt wild hogs on private land year-round throughout North Carolina, and it's even legal to hunt them on private land at night with lights and electronic calls, and to trap them.

Game lands also allow hunting feral swine. A permit is required.

No bag limits exist on wild hogs, but anyone hunting them must have a valid hunting license, unless otherwise exempt from having a license pursuant to G.S. 113-276.

ELECTRONIC EAR PROTECTION

Ask us about our affordable hearing enhancement and custom protection devices!

- Custom/Electronic Ear Protection
- Hearing Amplifiers/Enhancers
- Cerumen/Wax Removal
- Video Otoscopic Evaluation of Tympanic Membrane
- Hearing Aid Fittings/Rehab Reports
- Comprehensive Hearing Test & Consultation Reports (Apparent Hearing Loss Concern)
- Tinnitus Workup Reports
- OTC Hearing Aids
- Hearing Aid Service/Repairs
- Auditory Deprivation Reports



KNIGHTDALE: (919) 500-7455 **ROCKY MOUNT: (252) 378-2018**
DOWNEASTHEARINGCARE.COM



LEUCISTIC GOOSE



This leucistic goose was a nice surprise for Colton Byrd.

Colton Byrd was hunting in Harnett County, NC when he killed the leucistic Canada goose on the right, along with some other Canada geese.

Leucism is an abnormal condition of pigmentation, and can be found in birds, mammals and reptiles. It's caused by a genetic mutation which halts the depositing of melanin and other pigments into feathers, skin or hair. This results in an overall pale color, or patches of pale color. The condition is slightly more common than albinism and animals affected by it are not prone to the same ailments as albinos. ■



Invasive blue land crabs are spreading along the SC coast.

REPORT SIGHTINGS OF BLUE LAND CRABS

Residents and visitors along the South Carolina coast have been seeing growing numbers of what look like enormous fiddler crabs, according to SCDNR biologists. But these creatures are blue land crabs, native from Brazil to South Florida, but seen only occasionally in South Carolina until recently

Anyone seeing one of these crabs is encouraged to snap a photo and report the sighting to SCDNR.

The agency does not yet know the extent of the crab's distribution throughout the state. And it's also unclear what impact these creatures are having, or will have, on other wildlife and the environment.

Their name is a bit deceiving. Blue land crabs actually vary widely in color. They live unusually long lives and can survive as long as 11 years.

These are burrowing crabs, retreating deep below the ground, aiding the difficulty in catching them. Wildlife biologists aren't sure if they've expanded their range naturally, or if they have been released here by humans.

Blue land crabs may be more visible during periods of heavy rain, when they are driven out of their burrows by high water. If you see one, report the sighting by visiting dnr.sc.gov, then searching for blue land crab. ■

12 Delicious Marinades

BUFFALO RIDGE

GOURMET BRISKET BEEF JERKY

Original Style

SEE ALL WE HAVE TO OFFER, JERKY, NUTZ AND CANDY AT BUFFALORIDGEJERKY.COM

TRY OUR NEW TURKEY JERKY

USE DISCOUNT CODE CSM20 TO GET 20% OFF YOUR FIRST ORDER!

LIKE US ON facebook



BAG-A-BUCK

WINNER

YOUTH HUNTER WINS SEPTEMBER BAG-A-BUCK

Crossbow shot dropped tall-racked 8-pointer

Brooklyn Rice of Mars Hill, N.C. killed an 8-point buck with an unusually tall rack on Sept. 10 in Madison County, and was drawn as the Carolina Sportsman Bag-A-Buck winner for September.

Rice was hunting with her dad when she drilled the buck with a Ravin R10 crossbow from 27 yards away.

It was a hunt, her dad said, that wasn't supposed to happen.

"Our crossbow was in the shop due to broken cams. But a good friend came through, letting us borrow his Ravin R10, as he was going to be at the beach opening day," said Caleub Rice.

The two also arrived to their stand a little later than planned, but it turned out to be perfect timing.

PERFECT TIMING

"About 7 a.m., we got settled in, crossbow loaded and seated in position. We gave each other knuckles to say good luck, then got quiet. I pulled my phone out to do what else but take a selfie of us. I looked back up and there he stands with another 6-pointer at 30 yards," said Brooklyn's dad.

As a monthly winner of our Bag-A-Buck Contest, the young hunter will receive a 1-year subscription to Carolina Sportsman Magazine and a MAGLITE XL50 LED Spectrum flashlight.

Rice, along with every other entrant of the contest is eligible for the Grand Prize, which includes a 3-year subscription to Carolina Sportsman Magazine, a 2-day, two-person deer/hog hunt at Cherokee Run Hunting Lodge in Chesterfield, S.C., a Barnett Hyper XP 405 Crossbow, a MAGLITE Field Ops Bundle, A Grey

Brooklyn Rice won the September Bag-A-Buck prize, which includes a MAGLITE XL50 LED Red Spectrum flashlight.



Man Tactical Vehicle Hunting Gun Rack package, and a Seneca Dragon Claw Ready-to-Hunt Combo from Pyramid Air.

We accept entries for the Bag-A-Buck contest all season long for bucks killed by hunters from North and South Carolina during the current deer hunting season. Sign up through Jan. 1, 2023 at carolinasportsman.com/bag-a-buck. ■

Bag-A-Buck Contest

underway



To enter or see deer that have been entered, log onto www.carolinasportsman.com/bag-a-buck

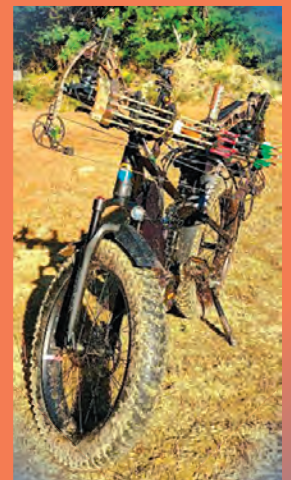


SPORTSMAN CERTIFIED

M2S electric bikes are “Sportsman Certified” for a reason- they are designed and developed right here in the Carolinas with the finest materials at a better value than our competitors.

Carolina Sportsmen and women demand great performance and quality when choosing a tool to chase the next trophy, and the All-Terrain Ultra Series will help you stay quiet and efficient, without even breaking a sweat.

Call our support staff to schedule a 1-on-1 appointment with our superior support staff and experience the M2S difference for yourself.



  828-676-3808 • m2sbikes.com

SPORTSMAN'S BIG BUCK GALLERY

OUTDOOR
UPDATE



Adam Revels of Selma, N.C. killed this buck in Johnston County on Sept. 12.



Austin Busick killed this 16-point nontypical buck in Guilford County on Sept. 15.



Anthony Anders killed this buck on Sept. 12 during what he called an unforgettable hunt.



Garrett Collins of Ruffin, NC killed this Rockingham County beast on Sept. 11.



Austin Taylor drilled this 16-point Rockingham County buck on Sept. 14.

ON THE
COVER



Naomi Scheer of Reidsville, NC killed her first deer, this 10-point Rockingham County buck on Sept. 17.



Natalie Swaney's McCormick County, SC non-typical buck sported a very unique 17-point rack.



Charmin Stroud was hunting in Orangeburg County, SC when she killed this fine buck.



Evan Martin's Cabarrus County hunt on Sept. 10 resulted in this 9-point velvet beauty.



Knoll Dial dropped this 14-point hammer in Fairfield County, SC.



Justin Townsend arrowed this buck in Rockingham County.

To read full stories about any of these trophy bucks, visit www.carolinasportsman.com and visit the deer-hunting section.

SPORTSMAN'S BIG BUCK GALLERY

OUTDOOR
UPDATE



David Lambert of Clinton, NC arrowed this Orange County buck in velvet on Sept. 10.



Rosalyn Ballam's second low-country SC deer of 2022 was this hit-list 8-pointer from Williamsburg County.



Robby Justice of Gaston, SC killed this 9-point velvet buck on Aug. 16.



Zack Porterfield's Person County buck had dual split brow tines.



Madeline Moore of Irmo, SC dropped this Richland County 8-pointer on Sept. 13.



Jennifer Bowen killed this Wake County, NC buck on Sept. 17.



JT Coley killed this 150s class buck in Durham County on NC's opening day.



Richie Dabbs killed this buck in Rockingham County, NC on Sept. 18.



Emma Fitzgerald was hunting with her crossbow when she killed this buck.



Zae Pinckney of Georgetown, SC killed his first buck while hunting with family member Tyshan Graham.



Brent Davis killed this Kershaw County, SC buck during the late morning of Sept. 5.

To read full stories about any of these trophy bucks, visit www.carolinasportsman.com and visit the deer-hunting section.



■ By Terry Madewell

**BIG BUCKS LET DOWN
THEIR GUARD DURING
BREEDING SEASON.**

MAKE THE MOST OF THE RUT

The exact timing on the rut varies considerably in North and South Carolina, and like anything to do with real estate, *IT'S ABOUT LOCATION.*

Rut patterns change from the coastal plains to the mountains in each state. But the key element is the rut is driven by biological changes within deer.

To make the most of the rut, hunters first need to understand when it's going to occur in the areas they hunt.

Moriah Boggess, the State Deer Biologist for the North Carolina Wildlife Resources Commission (NCWRC), said the rut process is determined by the does.

"Every deer has their own internal clock in terms of breeding. So the timing is not exactly the same. But deer in the same general locations tend to develop similar patterns for estrus," Boggess said.

"Physiologically bucks are ready for reproduction when they

shed their antler velvet," he said. "At the same time, their coats begin to change. They abandon bachelor groups, and bigger bucks typically no longer associate with smaller bucks."

Boggess said these biological changes create a prime opportunity for hunters. Bucks begin to strive for dominance and leave more sign in the woods as they seek does.

"It's the one time of the year when propagation of the species outweighs a big buck's normally acute survival instincts and food," he said. "Knowing when the rut typically begins is a key to making the most of the rut."

The other factor in making the most of the rut is employing the right tactics to see more deer at this time of the season.

PLAN IT OUT ➤



Bucks don't eat much during the rut, but they will constantly check food plots and bait piles for does. **OPPOSITE PAGE:** Darrell Madden said mid-day hunting is prime time to hunt during the rut.

PLAN IT OUT

Tyler Chappell from Gray Court, S.C. said a planned strategy is crucial to success. But in its simplest form, rut-hunting success is all about finding doe deer.

“Find lots of does and bucks will be around,” Chappell said. “It’s not totally that simple. But finding does is the core component of killing big bucks during the rut. They’re going to seek does to breed. So I find does on the property I hunt and plan my hunting strategy around those locations.”

Chappell (864-419-1462) is a professional turkey hunting guide and along with business partner, Andy Shaw, operates Solid Stand Property Management company. They design and implement plans to transform property into elite hunting areas.

“Does move from summer and early season areas to thicker vegetation areas,” Chappell said. “It may be thick, gnarly bottoms near a water source, or a cutover area. Thick areas offer a sense of privacy and serve as bedding areas. But deer still travel for food. When planning a rut-hunting setup for a specific property, I identify the cover where deer are likely to be and I locate nearby food sources and the travel route options to the food.”

Chappell said a buck’s attitude changes during the rut.

“Bucks transform from wary, secretive creatures to behaving like teenagers,” he said. “Hunters still must do everything in their power right in terms of stand location, playing the wind correctly, ingress and egress to the stand and scent control to see bucks.

“Part of that is to fool the bucks. But hunters often forget if they’re hunting areas with a high doe population, that a mature doe deer is extremely wary,” he said. “You often have to defeat

the highly refined senses of multiple adult deer before you have the opportunity to see a big buck. But spook the does, and odds dwindle dramatically.”

TARGET SPECIFIC AREAS

Chappell said he’ll identify stand sites where hunters have clear visuals of edges between various types of vegetative growth to see deer movement.

“Edgelines between mature woods and a cutover, for example, are prime travel routes for bucks during the rut because they can see longer distances looking for does,” he said. “They can usually find ideal places to make scrapes, too. As the rut nears the peak of breeding activity, scrapes are less often activated. But these edges are still excellent places to see bucks and does traveling.”

Chappell said every property is unique in terms of where deer may prefer to move. But identifying funnels of cover where deer feel more protected, such as thick bottoms and natural areas of dense cover, are ideal travel routes. Climbing stands, when appropriate on the property being hunted, can provide hunters increased mobility to select ideal setups to take advantage of current travel routes.

“The entire deer season is made up of changes and the rut is no different,” he said. “The movement patterns change as food sources vary and as the rut morphs from pre-rut when few does are in estrus and competition among bucks is great, to the peak when many does are ready to breed. Don’t simply scout for deer, but think in terms of food and water too. Bucks may not eat a lot, but they will check food sources for does constantly.”

Chappell said strategically located food plots for the rut can be a key attracting feature for does, and thus bucks. Plus, bait



stations such as corn placed in the right areas can be extraordinarily productive.

“Bucks may or may not feed at corn piles,” he said. “But if you’re in a well-hidden stand overlooking a bait station in a narrow lane of thick cover, odds are high bucks will step out downwind of the corn and check that spot for does. But be ready, because if no does are feeding he’s likely to step into the thicket and be gone. He may eat, but you can’t count on it.”

TRAIL CAMS ARE ESSENTIAL

Chappell said he loves the real-time opportunity to see deer on cellular trail cameras.

Employing cameras throughout the season enables him to see what bucks are available. He can literally name the ones he deems to be “shooters” on his hit list. As deer patterns morph, he tracks this change via cameras and switches stands, or employs climbers, to hunt where deer are more numerous or where a specific big buck is currently using.

“On a large tract of property, we’ll assign the various property types into different zones and have cameras along with feed or mineral stations for each,” he said. “A 1000-acre tract may have multiple zones based on topography and vegetation. And we’ll make specific hunting strategies for each zone.”



Thick habitat offers excellent cover for deer during the rut and needs to be part of a hunting strategy. ABOVE: Scrapes, and how they’re tended are indicators about the status of the rut.



CAPTAIN FROGGY’S GUIDE SERVICE

(252) 661-7222

Open Water
Hunts on
Pamlico Sound

Up To 3 Hunters:
\$400

Each Additional Hunter:
\$100



www.DUCKHUNTINGNC.com

Make the most of the rut

Tyler Chappell said stand mobility can be a key during the rut.



Chappell said success during the rut comes down to hunters being in the right place at the right time. And that's not always as simple as it sounds.

"But the odds are better for big bucks during the rut than any other time of the season," he said. "Hunt as often as you can, focus on thick cover and travel routes to food sources from agriculture crops, natural forage or bait stations. Always play the wind and don't hunt a stand if the wind is wrong. And despite the benefits of the rut with mature bucks, they're still challenging and have proven that by surviving multiple seasons to become mature."

Understanding when the rut occurs in your area and having your game plan operational for the specific area you hunt, and adapting to changes, are keys to making the most of the rut and tagging that trophy buck this season.

MAKE THE MOST OF THE MOON

Darrell Madden from Semora, N.C. has hunted deer most of his life. The member of the RedHead Pro Staff Team at Bass Pro Shops said moon phases are important to him.

"My years of hunting have proven that the full moon phase during the rut is an important time to be locked into the seat of a good deer stand," he said. "I'll get comfortable and stay as long as my schedule allows. Mid-day deer movement can be excellent throughout the rut. But around the full moon, big buck activity is high and it doesn't necessarily occur early or late in the day."

"It's the one time of the year when big buck movement is likely to occur mid-day as much as any other time," he said.

Tyler Chappell agrees. He said hunting mid-day is a good bet anytime of the rut. But his hunting success suggests that around the full moon phase is prime time for mid-day hunting.

"I've patterned deer for many years. And some of my biggest bucks were shot around 1 and 2 o'clock in the afternoon," he said. "Patience and time spent in the stand pay big dividends." ■




CAROLINA[®]
TOOLS. COOKS. LEGENDS.
COOKER
— EST. 2007 —

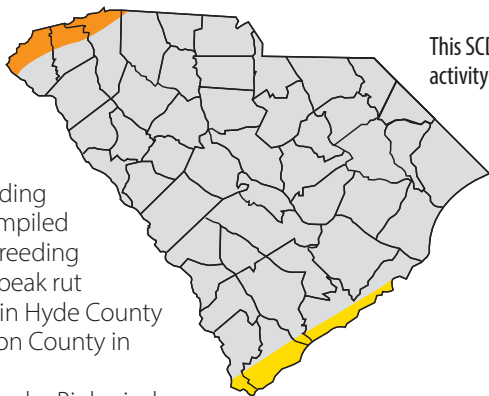
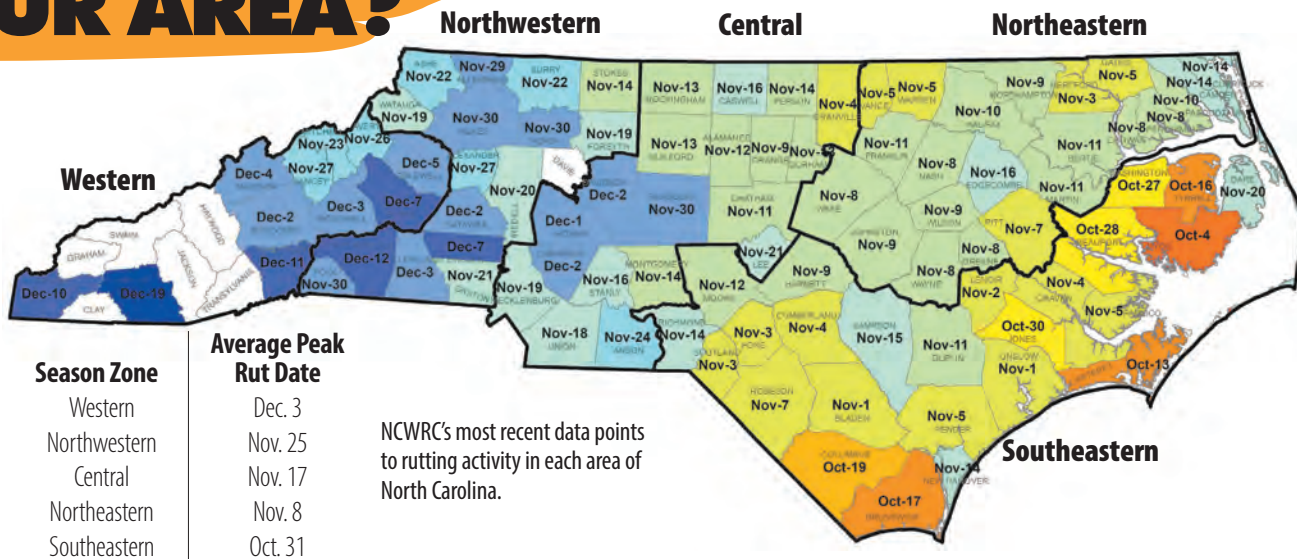
**Cast Iron, Stew Pots,
Stock Pots, Discadas,
Accessories, & More!**

833-926-6537
CarolinaCooker.com



DISCADA COOKING

WHEN IS THE RUT IN YOUR AREA?



This SCDNR image shows peak activity of the rut in South Carolina.

- Oct. 1 - Nov. 1
- Oct. 15 - Nov. 15
- Nov. 15 - Dec. 15

Moriah Bogges with the NCWRC said the current information, including the latest data compiled in 2022, of peak breeding shows a range in peak rut dates from Oct. 4 in Hyde County to Dec. 19 in Macon County in North Carolina.

The peak rut dates by Biological Deer Management Units are:
 Unit I – Dec. 3
 Unit II – Nov. 25
 Unit III - Nov. 17
 Unit IV – Nov. 8
 Unit V – Oct. 31

In South Carolina, Charles Ruth, with the SCDNR, said the rut for the majority of the state will be from mid-October through mid-November. But detailed records show that from Oct. 20 until Nov. 10, over half of all the deer conceptions occur in South Carolina. And that's considered the peak of the rut.

"Localized areas can certainly experience peak rut activity any-time within that period and it may change year-to-year based on external factors," Ruth said. "In the upstate, mountainous section of South Carolina the rut is usually later, with the peak typically in late November. With that peak time, deer rut activity can continue into December." ■



Terry Madewell of Ridgeway, S.C., has been an outdoors writer for more than 30 years. He has a degree in wildlife and fisheries management and has a long career as a professional wildlife biologist/natural resources manager.

GREENER PASTURES ➤

READY TO HUNT MONSTER BUCKS?

TOP WHITETAIL DESTINATION in the WORLD

100% NO KILL, NO PAY

PRIME MISSOURI HUNTING PROPERTY
 1,700 acre whitetail ranch in Bismarck, Missouri
309-339-6600
hunttwinlakeswhitetails@gmail.com
WWW.TWINLAKESWHITETAILS.COM

FOLLOW US!

Usually wary all year, bucks let their guard down while looking for mates during the rutting season.



IT'S HARVEST TIME

BUCKS GET CARELESS DURING THE RUT

As November arrives, deer hunters across the Carolinas are hammering the daylight trying to get as much time in the stand as possible to get a hit-list buck on the dirt. No doubt, this month is one of the best periods of the deer season to be in a stand for an encounter. And every hunter that wants a chance at a good deer should be in the woods as much as possible. But increased hunting pressure across the board can be detrimental to hunting efforts if concentrated in the same places.

Bucks are on the move trying to pass on their genetic packages to every available and willing mate left over in the herd. At the same time, Old Man Winter is creeping in and food resources are drying up everywhere.

Deer activity will definitely peak this month in the day and throughout the nighttime hours. Bucks will be wandering all over the place looking for the ladies and just about any stand on the farm can produce an opportunity and

encounter with a buck. But anywhere the does will be congregating will generally produce the best opportunities to encounter their male counterparts.

Acorn-filled oak ridges and fields in the agriculture belt will have high concentrations of deer. And deer will be scavenging in relic corn fields, soybean fields and peanut fields. Also, the farmer's newly planted fields of winter wheat, oats, and triticale will have full usage by the deer herd. And for the prepared hunter and land manager, the well-established food plots filled with wheat, oats, and clover are going to be tough to beat this time of year.

FOOD SOURCES

Bottomline, food sources will be the prime places to hunt from now until the end of hunting season. And hunting food sources can be more than just hunting over a green food plot or relic soybean field. Trails leading to and from these plots that connect to major bedding zones can be excellent places to set up and wait on that dream buck.

While food sources are essentially the best places to spend the hunting hours for a good deer, these food sources can't be pressured too much or the deer will shift to a nightly feeding schedule. And that is especially true for the mature bucks on the land. A smart buck will sniff out the pressure and learn to avoid these places during the daylight.

The best advice, for hunting active food plots, agriculture fields, and other highly used food sources, is to hunt these sources when conditions are favorable with respect to wind and weather conditions. Secondly, hunters should select a handful of good feeding routes and food sources to hunt during November and hunt these areas on rotation, without putting too much pressure on these feeding areas.



Jeff Burleson is a native of Lumberton, N.C., who lives in Myrtle Beach, S.C. He graduated from N.C. State University and is a certified biologist and professional forester for Southern Palmetto Environmental Consulting.

BOOST YOUR PLOTS

Mature bucks don't respond well to hunting pressure even if the groceries are good. Bucks that grow to 3- to 5-years-old don't survive to the following year by placing themselves in a precarious position where death is possible. Bucks will not avoid these places completely. They will just go nocturnal. And that eliminates the possibility for a November or December encounter.

As a final note, any green food plot that is getting hammered by the deer may need some nutritional boosts in November to keep productivity high. Land managers can apply a shot of nitrogen in November to maintain re-growth of those tender sprouts.

Ammonium nitrate or Calcium nitrate are the best granular or solid forms of Nitrogen supplementation for top dressing wheat, rye, oats, or triticale for a late fall/early winter boost. And 75 to 100 pounds per acre can make a noticeable difference to the growth and productivity of these plots if applied now. ■

Hunters have more opportunities to tag bucks in November than any other month thanks to the rut.



Jeff Burleson

NOVEMBER NOTES:

The peak of the rut takes place in November throughout most of the Carolinas, and the increased buck activity makes it a great time to get youth hunters more interested. Their chance of seeing a shooter is higher on average than it will be any other month of the hunting season.

Need Food Plots?

Let us do the chores of building and maintaining food plots so you can hunt.



WeBuildFoodPlots.com

704-904-3851

COOKING ON THE WILD SIDE ➤

Celebrating
25 Years
in Business



Freshest Deer Lures
on the Market.
Poured current season
with dated packaging.

**START
THOSE
MOCK
SCRAPES
NOW**

**PROMO
CODE:
FALL22
FOR 10% OFF**

423-638-2825



**Hunting the Rut
Will Never
Be the Same,
Introducing V.**

V is collected at the absolute peak of whitetail doe estrous cycle. Scientifically calculated by the temperature of the vaginal walls when she is receptive for breeding and collected during artificial insemination. During artificial insemination vaginal walls are cleaned and secretions are removed to not interfere with the artificial insemination process. That is where V comes from!

blackwidowdeerlures.com/shop

Deer Herder's Pie is comfort food, and is a complete meal in itself.

DEER HERDER'S PIE

VENISON VERSION OF
SHEPHERD'S PIE



Venison can be prepared many ways. Some are better than others. This venison version of shepherd's pie falls into the second group. The recipe calls for multiple ingredients, but it's simple and just about everyone I've ever served with it liked it.

You can harvest the venison yourself or have a great friend share some with you. You can even mix in feral pork.

One of the factors that endears

hunters to game is harvesting it themselves. We have no worries about where it came from or how it was handled. You have the memory of the hunt and taking the shot. Then you field dress the deer and process it. This is the original field-to-table process.

This is a tasty, complete meal that is easy to prepare, and it's filling. Even some that don't normally care for venison have enjoyed it. Hopefully, you'll enjoy it also. ■

TIP!

Make this to serve during the weekend after Thanksgiving for a change of pace from turkey leftovers.

DEER HERDER'S PIE

To get the name "Deer Herder's Pie" this is made with ground venison. I like to mix it up occasionally and use ground feral pork for half of the meat. Unless fat is added, feral ground pork is also very lean, sometimes as lean as venison. This can be plain ground pork or some with sausage seasonings added. The sausage seasoning will change the taste of the finished pie a little. But I have always enjoyed these differences.

Add a little more of flavors you like and lessen ones you don't care for. But let me warn you to be careful when adding the liquid smoke. A little goes a long way. You don't need much. The idea isn't for this to taste like it just left a smokehouse, but to have a hint of smokehouse flavor.

Stirring the flour in is an important part of this.

PREPARATION: Serves 8

Meat Filling:

1. Chop the onions.
2. In a large skillet, combine the ground venison, onion, garlic, Italian seasoning, liquid smoke, salt and pepper and brown over medium to medium-high heat. Be sure to break up the venison as much as possible.
3. If there is any grease, drain it.
4. Sprinkle the flour evenly over the meat mixture and cook approximately 1 minute, stirring the flour in.
5. Stir in the tomato paste, broth, Worcestershire sauce and oregano.
6. Bring this mixture to a boil, then reduce heat to medium-low.
7. Stir in the frozen peas, carrots and corn.
8. Cook another 5 minutes or so until the mixture is heated throughout.

Mashed Potato Topping:

1. Peel the potatoes and dice them into roughly thumb size pieces.
2. Put the potatoes into a large pot of water with a dash of salt and bring it to a boil.
3. Cook the potatoes until they are tender, approximately 15 minutes.
4. Drain the water from the pot and mash the potatoes.
5. Add the butter, Half and Half, and garlic powder and continue to mash the potatoes until they are smooth. You can use a mixer at this point to finish the blending and smooth the mashed potatoes.

TIP!

Use a mixer to mash the potatoes and blend in the butter, Half and Half and garlic powder.

No drippings are in the pan to make a roux, but it adds flavor. Pay attention, stir evenly and a lot. Be sure to spread it throughout and don't allow the mixture to get too hot and scorch the flour.

The topping can be made with white potatoes and many people use them. I like the natural creaminess and buttery flavor of Yukon Gold potatoes, so I use them. If you can't find them and make this with white potatoes, add another tablespoon of butter when mashing them.

This simple meal has many qualities of a stew or soup, but without all the liquid. It is a good choice for a warm meal after a November hunt or fishing trip. Give it a try – I'm sure you'll like it. Enjoy! ■

COMBINED:

1. Preheat the oven to 375.
 2. Use buttery flavored cooking spray to grease a 9x13 baking dish.
 3. Pour the meat mixture into the pan and spread evenly.
 4. Spread the potato topping evenly over the meat mixture.
 5. Bake this for approximately 20-25 minutes. The mixture should be hot and bubbly.
 6. Remove from the oven and sprinkle the cheese evenly across the potato topping.
 7. Cook approximately 5-10 more minutes until the cheese has melted. Pay attention and don't scorch the cheese.
 8. Remove from the oven and allow the deer herder's pie to sear for 10 minutes before serving.
- This may not leave room for dessert, but hot apple, peach or cherry cobbler will be nice for later. ■

INGREDIENTS:

2-pounds ground venison (or 1 pound venison and 1 pound feral pork)

1 Cup chopped sweet onion

½ Cup chopped red onion

1 TBL minced garlic

1½ Cups frozen peas and carrots

2 yellow squash

1 Cup frozen corn kernels

1 Cup shredded cheddar cheese

1 Cup beef broth

3 TBL flour

2 TBL ground Italian seasoning

2 TBL tomato paste

2 TSP liquid smoke

½ TBL Worcestershire sauce

½ TSP dried oregano

Salt and pepper to taste

Mashed Potato Topping:

4 Large Yukon Gold potatoes

2 ½ TBL butter

½ Cup Half and Half

1 TSP garlic powder



This dish is ready for the oven, and shows its likeness to Shepherd's Pie thanks to the layered ingredients.

STICKS & STRINGS ➤



Jerry Dilsaver of Oak Island, N.C., is a freelance writer, as well as a former national king mackerel champion fisherman. Readers are encouraged to send their favorite recipes and a photo of the completed dish to possibly be used in a future issue of the magazine. E-mail the recipes and photos to Jerry Dilsaver at captainjerry@captainjerry.com.

It's nothing short of irresponsible to hunt from an elevated stand without using the proper safety gear.



TREE STAND SAFETY

A LITTLE PREVENTION GOES A LONG WAY

I have focused on the journey and the process of bow hunting in this column this year. Part of that journey for me has been the realization that hunting from elevated tree stands is inherently dangerous, if proper safety precautions aren't followed.

After more than 30 years in the hunting industry, I've had many friends and acquaintances who have fallen and become severely injured. And even more who have had close calls. I've even had a few close calls myself.

With age comes wisdom (hopefully). And there's nothing like getting older to make you feel less invincible. Fortunately, today's technology has led to both much safer tree stands, as well as better fall-restraint systems. We no longer have a valid reason not to have

these safeguards in place when leaving the ground to bow hunt.

Most of the folks I know who have fallen from their stands have had slow and painful recovery periods. A few have resulted in paralysis or even death.

I'd like to focus on one particular incident that happened last year however, to someone very close to me. It was mid-October, and Ray was bow hunting for deer just north of Natchez, MS. He had finished his morning hunt around 10 a.m. and was frustrated for most of the hunt by a muscadine vine that was growing across his main shooting lane. It was just out of reach of his stand.

Ray unclipped his safety harness and climbed down from the stand's 12-foot height. Realizing he left his pack in the stand, he figured he would deal with

the vine once back in it. Before climbing back up, he cut off a long piece of the tag end of one of the straps on the ladder.

THE FALL

"Once I got up there (just below the stand), I tied the strap around the vine so I could pull it closer and cut it," he said. "I was holding onto the ladder and pulling on the strap with one hand, and holding the cutters in my other hand.

"The only problem was I still couldn't cut it. So I leaned out and let the strap



Sammy Romano is a lifelong hunter who has worked in the archery industry for more than 25 years. His expertise includes compounds and crossbows. He can be reached at samboka31@aol.com.

COMMON SENSE:

If you're climbing a tree, or any elevated platform, it's common sense to clip yourself in as safely as possible. And that's true, not just while you're in the stand, but also on your way up.

hold my weight instead of the ladder. I even said to myself that if the strap breaks, I'm screwed. Well, it broke and I fell."

Surprised at how quickly he fell, Ray was lying on the ground in an instant. Luckily, he had his cell phone in the top pocket of his vest. He could not have climbed back up the stand where the rest of his gear was. So it can't be overstated just how lucky he was.

He called other members of his hunting club. They quickly rushed to his aid. After a nearly hour-long ordeal that included an agonizing, bumpy ATV ride, Ray reached the Natchez Trace. A helicopter airlifted him to UMC Hospital in Jackson, MS. He was diagnosed with a broken humerus, five broken ribs, and a \$52,000 bill — just for the helicopter ride.

He didn't require surgery, but he had a painful 4-month recovery period. His bow season was over almost before it began.

COULD HAVE BEEN WORSE

"This easily could have been way worse. I'm lucky I wasn't any higher up, and that I wasn't paralyzed or killed instantly. A lifeline safety system and lineman's belt could have easily prevented this from happening," he said.

As we take to the woods, extra safety measures can avoid a season-ending injury or worse. The new "Life-line" systems allow a hunter to clip in their safety harness on the ground and stay attached the entire time they are elevated.

A linesman's belt or rope allows the safe use of both hands while hanging tree stands and trimming branches. We have no excuse for not taking advantage of these safety measures. If you don't do it for yourself, think of your loved ones and how much they care about you. Be safe out there and good luck. ■

Hunter Safety System





BAREFOOT ARCHERY

CHARLOTTE, NC
www.barefootarchery.com

Pro Shop & Indoor Archery Range

One stop shop for all your Bow Hunting & Archery needs!

We have all the Archery and Hunting accessories to make your season a success.



HOYT TORREX PACKAGE

\$849⁹⁹

MAKE YOUR BULLSEYE TODAY!

Full Service Proshop, Authorized Dealer for Hoyt, Mathews, PSE, and Bear Archery



HOYT

4410 Old Pineville Rd, Charlotte, NC 28217
Call today (704) 527-1110 • www.barefootarchery.com

OUT-FOXING CAROLINA FOX SQUIRRELS

HERE'S HOW TO HUNT
THE TROPHY OF ALL
SMALL GAME.

■ By Mike Marsh



Before the door to his pickup truck opened, Bruce Trujillo's dog, Poncho, was barking. Looking out the windshield since the wheels left the pavement, **HE WAS READY TO ROLL.**

"He sees woods and knows it's time to hunt for real," Trujillo said. "I take him for a run somewhere and tree a squirrel most mornings when squirrel season isn't open. It keeps us both in shape for hunting season when it arrives."

Poncho is a Carolina Cur. Originally bred by James Parnell in Society Hill, S.C. Carolina Curs are recognized by the National Kennel Club and United States Squirrel Dog Registry. Six-year-old Poncho has treed more than 700 squirrels that Trujillo and his friends took home.

"I'll take anyone to hunt gray squirrels," Trujillo said. "But fox squirrels are a horse of a different color. I am more secretive about places I hunt them."

FINDING FOX SQUIRRELS >

Fox squirrels come in many different colors, and are considerably larger than gray squirrels. **OPPOSITE PAGE:** Bruce Trujillo, Poncho and Mike Marsh pose with one of the more rare color phases of fox squirrels.





Gray phase is the most common color of fox squirrels and is similar to that of a gray fox, which gives fox squirrels their name.

FINDING FOX SQUIRRELS

The expression fits the game. The eastern subspecies that inhabits the Carolinas' coastal plain and lower piedmont is *Sciurus niger niger*. They exhibit more color variations than any other game mammal.

Before Trujillo could roll up his leash to stow in his vest, his head swiveled toward the woods. Poncho was already trailing. "He's on squirrel scent," he said. "The way he is trailing, it's likely a fox squirrel."

The trick to finding fox squirrels is locating the right habitat and reading the signs. Trujillo hunts private and public lands in several states. He lives in Castle Hayne, so he mostly hunts in North Carolina. Most of his fox squirrel hunts take place on NCWRC game lands.

"I have ridden for hours, searching for ideal habitat," he said. "An abundant fox squirrel population requires mature longleaf cones and turkey oak understory. It's hard to find both because as soon as a longleaf has cones, it is big enough to harvest. And frequent controlled burns prevent turkey oaks from producing acorns."

"You can find fox squirrels anywhere. Once you hunt with a dog, you find that out. But you can also waste a lot of time in marginal fox squirrel habitat or gray squirrel habitat. A fox squirrel might be in a hardwood drain. But there will also be lots of gray squirrels. The dog winds up treeing so many gray squirrels you might not find a fox squirrel for days."

Once he finds likely habitat, Trujillo drives roads, looking for fox squirrel tracks. Their footprints are bigger and more widely spaced than gray squirrel tracks.

"A fox squirrel will scamper along, jumping up on a tree trunk, then another and another, so he can watch for danger," he said. "That can make a difficult trail for an inexperienced dog. It took Poncho a long time to figure out how to circle a tree and figure out which way the squirrel jumped."

Trujillo also looks for feeding mounds (middens). Fox squirrels leave piles of discarded cone scales at the bottoms of feeding trees. They also build distinctive nests.

"A fox squirrel nest is huge, compared to a gray squirrel nest," he said. "They also use manmade materials. You might see paper, cloth, plastic and brightly colored twine used for tying pine straw bales sticking out of their nests."

STICK TO THE PINES

Once he finds good habitat and signs, he checks the proximity to hardwood stands. He doesn't turn the dog loose near them.

"If the dog gets on a gray squirrel, he's going to the hardwoods, which is wasting time," he said. "I keep him out in a savannah far from the edges so he is unlikely to run across a gray squirrel's scent. With a young dog, it takes some doing. Once Poncho learned how to hunt fox squirrels, he got better and better, until he was good at trailing and treeing them. It's nothing to watch and hear him race 400 to 800 yards in a straight line with his GPS tracking collar showing the route. If you didn't have confidence, you would think he was running a deer."

On this particular day, it took all morning to tree a fox squirrel. The squirrel was in a longleaf pine. Poncho had trailed it there for more than an hour. The squirrel had been feeding along, leaping a few feet up on a tree trunk, then moving again. Altogether, the squirrel tapped off of eight trees.

Eventually, Poncho stuck at one tree. Jumping on the trunk, what had been well-spaced trailing barks became frenzied barking. He moved around the tree, scenting the ground and nearby tree trunks, but kept returning to the tree with the squirrel.

LOOK CLOSELY >



Mike Marsh is a freelance outdoor writer in Wilmington, N.C. His latest book, *Fishing North Carolina*, and other titles, are available at www.mikemarshoutdoors.com.

©2022 Jordan Outdoor Enterprises, Ltd. 2268 22F



SCAN ME

ALL-NEW



REALTREE[®] MAX-7[®]
BE THE X

Designed for every pond, prairie and wetland in between, Realtree MAX-7[®] has the perfect blend of natural foreground and background elements combined with color found in waterfowl habitats that allows you to blend in perfectly where you need to be.

NO LONGER JUST LOOK FOR THE "X". BE THE "X" WITH NEW REALTREE MAX-7.

AVAILABLE NOW

MAX7.REALTREE.COM | @REALTREEOUTDOORS

A good dog like Poncho is a big plus when hunting fox squirrels.

LOOK CLOSELY

It took Trujillo 20 minutes to see it. Rather than hide in a fork like a gray squirrel, he was at the end of a limb. Wrapping his tail around his head, he peered through the fur. Trujillo used a binocular to find him.

“He looks like any other longleaf cone,” he said. “It’s amazing how hard they can be to see, as big as they are. Their tail usually gives them away.

“But, sometimes, even though you are certain he is up there because of the way the dog is barking, you still can’t spot him. He may be in a nearby tree, so you look up in them. He may be in a hollow, so you look until you find one. Sometimes you just have to figure his camouflage is so good or he is in a cluster of pine needles and cones so dense that you just can’t see him. Then, reluctantly, you tell the dog the squirrel is gone and urge him on so he will find another one.”

North Carolina manages fox squirrels with a bag limit of one per day and shortened season, but they can be taken on any state game land. South Carolina uses lands restrictions to control the harvest and they can be hunted on WMAs that are not state-owned. They can be hunted at Francis Marion and Sumter National forests and Manchester State Forest.

SCDNR Biologist Corey Drennan said he doesn’t want to see excessive pressure on fox squirrels at Sumter National Forest, but they are there.

“Hunters can find them mostly in McCormick and Edgefield



counties,” he said. “The habitat is mostly a mix of hardwoods and loblolly pine. So you will also find lots of gray squirrels.”

Danny Carlson, a wildlife technician at Francis Marion NF, shared similar sentiments.

“We don’t want to see undue pressure on fox squirrels, but hunters can find them in the large, open pine savannahs where there have been prescribed burns. The hardwood component

is along the edges in the creek runs and drains so they will tree gray squirrels, too.”

Manchester State Forest Director of Operations is Ken Kendall. He said fox squirrels are present there.

“We have a lot of loblolly pines and longleaf pines,” he said. “We also have some non-native slash pines that were planted, but have been removing them and replacing them with native pines. It is good fox squirrel habitat and we do see them.”

Kendall said not many squirrel hunters head for Manchester, but a few hunt there. He also wants hunters to be careful and not overharvest them.

“A fox squirrel is the trophy of small game,” Trujillo said. “I hunt them a few times each year and never take more than one or two from one spot. I want to make sure there are some in the same spot, next season.” ■

PIG COOKERS, PATIO GRILLS, SMOKERS CUSTOMIZED BBQ TRAILERS



CUSTOM BUILT
QUALITY
OUTDOOR
BBQ PRODUCTS
SINCE 1989



MORE INFO? 1-252-236-4464 | WWW.BQGRILLS.COM | 6043 HWY 301N, ELM CITY NC

The different color variations of fox squirrels is an adaptation that allows them to hide from predators.

TWO SUBSPECIES AND THEIR COLOR VARIATIONS



The subspecies inhabiting the Carolinas' coastal plains and lower piedmont is the southern subspecies, *Sciurus niger niger*. They exhibit more color variations than any other game mammal. A second subspecies, the eastern fox squirrel, *Sciurus niger vulpinus*, repopulated North Carolina's Appalachian Mountains from the north about a decade ago, prompting the state to create its Deer Hunter Observation Survey (DHOS).

The DHOS actually began as a fox squirrel survey. Hunters who saw the standard color, eastern fox squirrels with russet tails and undersides and gray bodies wanted to pursue them. Other hunters were also seeing greater numbers of the southern subspecies.

The 1000 hunters who logged everything they saw from a deer stand over four seasons proved fox squirrels were distributed more widely than previously thought, resulting in an open season for the entire state. Prior to that, only 27 counties had a season. DHOS data also resulted in a 1-month extension of the season, through January.

The reason southern fox squirrels have such wide color variations is their fire-dependent habitat. Fox squirrels have litters of individuals with different color patterns – gray with black head, black with white nose, ears and feet, even all-white or all-black

with everything in between.

When startled, fox squirrels can freeze at the end of a limb, roll up their tails and look like longleaf cone, or they can disappear against a fire-charred pine trunk. The classic coloration, resembling a gray fox, allows them to blend perfectly into the leaves of turkey oaks where they have not been defoliated or eliminated by burning. Fox squirrels with camouflaging fur that allowed them to hide from predators passed these color variations to their descendants. ■

ALL DOGS GO TO HEAVEN >

The Outdoor Sportsman's Paradise

1980 Mt Holly Rd, Rock Hill, SC 29730

Guns
Grills
Safes



Boots
Bait
Stands
Clothes
MORE

Buggies
AND



Benelli



BERETTA



Smith & Wesson

SPRINGFIELD
ARMORY
DEFEND YOUR LEGACY



The author and his wife pose with Up The Creek Trapper John, their latest field champion.



Pat Robertson

DOWN MEMORY LANE WITH JACK AND JOE

FIRST DOGS ARE ALWAYS SPECIAL

Springtime 1950. As soon as I stepped off the old yellow school bus I heard whimpering sounds from behind the big clapboard farmhouse. I ran to the backyard to find two beagle pups sitting in an old chicken coop, crying for attention.

And attention is what they got, all a 12-year-old could give them. Thus began my lifetime love affair with beagles.

One pup had a solid black blanket with tan and white markings on the legs and face. The other had more of a brown blanket with tan freckles on his white chest and legs. I named the darker one Jack and the lighter-colored one Joe.

They became my constant companions. We explored the woodlands and farm

fields surrounding the old farmhouse. Both beagles displayed a keen interest in all the smells they encountered and soon they began tracking scent trails, primarily rabbits and squirrels.

By that fall Dad and I had made several rabbit gums, wooden traps with a door that fell into place once a rabbit entered and touched the stick that served as a trigger. Every morning before school, I took Jack and Joe to check the rabbit traps. If I found one triggered, I'd let the rabbit out and work Jack and Joe on that trail. When I came home in the afternoon, I'd usually find the pair curled up and sleeping after spending most of the day hunting and chasing rabbits.

They developed into excellent rabbit

dogs. Jack was the stronger tracker and usually was the one that would push a cottontail out of his hiding spot. He was true to the line and relentless in pursuit. Very few rabbits escaped when Jack was on the chase.

TRAGEDY STRIKES

Joe complimented him perfectly and he had one other attribute I've seen only rarely in rabbit dogs over the years. If a



Pat Robertson covered outdoors issues for more than 30 years for *The State* and *The Columbia Record* newspapers. Now retired, he is a full-time free-lancer living in Blythewood, S.C., where he and his wife, Jan, raise beagles and compete in field trials.

Watching beagles on the scent trail is one of the greatest joys of hunting with dogs.

rabbit was wounded by a shot or just too tired to run fast anymore after a solid chase, Joe would catch the rabbit, lay down and hold it until I came to retrieve it. He had a soft mouth and would not chew on his prey, just hold it.

When Jack and Joe were about two years old, we moved to another house near a busy highway. The house was set back in the woods, well off the road. Jack and Joe instinctively kept to the woods, never venturing into the roadway. When I came home after school, I'd often hear them trailing rabbits or squirrels down in the woods behind the house.

Then tragedy struck.

One Saturday we were hunting a wooded area adjacent to a peach orchard. Joe had already retrieved and held a rabbit for me and Jack was hammering on another cottontail in the woods. Joe found another line that took him toward the peach field.

Between our hunt area and the peach trees there was a deep and wide ravine. The bottom was littered with limbs that had been trimmed from the trees. Joe trailed the rabbit down to the bottom of the ravine and started up the other side toward the orchard.

I was trying to determine if I could safely get through that big gully to retrieve Joe when a car drove up on the other side. Just as Joe came up out of the ravine a man jumped out of the car, grabbed Joe and drove off with him as I screamed, "Don't take my dog!"

UNFORGETTABLE

I had just witnessed the dark side of mankind. I have no use for a dog thief, especially one that would steal a boy's beagle in broad daylight. I hope there is a special place in eternity for people like that.

I never got over that crime and neither did Jack.

Jack became listless, even morose. When I came home from school, I often could not find him. He was somewhere down in the woods, probably looking for Joe.

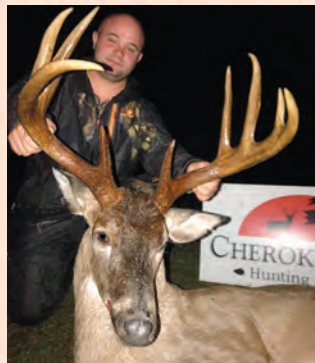
Then one day I came home from school and found Jack laying in the highway. I guess he decided to search the woods on the other side for Joe and did not make it across. I buried Jack in the woods behind the house and did not own another beagle until many years later.

When my wife and I got married I acquired four beagle/black and tan pups and started back rabbit hunting with reborn enthusiasm. That led to participation in beagle field trials. We have finished champions in the field and for a period we were active in dog shows and finished



champions in the ring.

We have not been without beagles since that mixed breed hunting pack I started back rabbit hunting with many years ago. But while we have had some great field trial champions and show champions, those first two rabbit chasing beagles, Jack and Joe, hold a special place in my heart. ■



HUNT THE BLACKWATER SWAMPS & PINES IN THE SANDHILLS OF SOUTH CAROLINA

Tom Naumann, Owner/Operator • tnaumann@eatsleephunt.com • facebook.com/Cherokee-Run-Hunting-Lodge-LLC-334159500615

704-301-7950

EATSLEEPHUNT.COM

CHESTERFIELD, SC



WATERFOWL HUNTING THE OLD WAY

**NC HUNTER USES OLD-SCHOOL
METHODS ON DUCKS.**

■ By Craig Holt

OLD SCHOOL DOESN'T BEGIN TO DESCRIBE ALAN PAGE,

although he falls in the age bracket, if not in fact by inclination.

Had he been born two centuries earlier, the Virginia Beach native now living in Garland (Sampson County) would have been perfectly satisfied. He's always enjoyed working with his hands, making just about anything he needed for his home and to pursue his passion for hunting and guiding.

An artist in wood, paints and glass, Page is the owner of Leaning Tree Game Calls. He hand carves beautiful geese, trumpet calls for turkeys, friction and deer grunt calls plus working, inscribed duck calls of hickory, oak and cedar. He's

also sculpted juniper duck decoys since his high school days.

While being interviewed for this story, Page worked on a handmade 14-foot push pole to maneuver a canoe around nearby saltwater flats.

"I want to use it for red drum fishing, poling without a motor because drum are so skittish in shallow water," he said. "My next project is to learn to fly fish for them so I can take clients who want to try it."

With his heavy beard, Page resembles one of the Smith Brothers of 1950s cough-drop fame — but with a bald head. He shaved it when his first born son, Dakota, battled cancer 20 years ago. Treatments caused the boy to lose his hair, so Page shaved his own head in his son's honor. He's kept his shiny pate.

When he was a teen, Page roamed the wilds of southeastern Virginia, from the sand bridges south of Back Bay to Currituck Sound. That's where he began to learn waterfowl hunting.

HANDMADE ➤

Black Labradors are favorites among waterfowl hunters, including Alan Page. **INSET:** Hand-carved duck calls are a specialty of Alan Page's Leaning Tree Game Calls. **OPPOSITE PAGE:** Mallards are prime targets of Alan Page and his clients, with some wood ducks mixed in.



HANDMADE

“There was one store, and a next door neighbor used a pickup truck to go to False Cape Gun Club,” Page said. “I’d ride with him down the beach to get there. We hunted ducks and geese from land.

“We used handmade decoys, like the old-time carvers and waterfowlers. We hunted from blinds at coves and waved our hands to attract geese. We hunted waterfowl from ‘spits and spats’ (rough-made leaning blinds of reeds and sticks tied together, open on one side).

“I’m a carpenter by trade and was a one-man construction crew. I started when I was 18 out of high school. I had a reading disability, but I can learn anything if I can see it. Then I can build it.”

He harvests the wood he shapes into calls and decoys, except mahogany.

“I use red cedar, black walnut, magnolia, dogwood — any wood with pretty grains,” Page said. “I bought \$1000 of mahogany from a guy and now have enough to last a lifetime.”

Today Page lives with his wife and son near the Black and South rivers, not far from Bladen Lakes State Forest. A 23-year-old daughter, Skye, has a blog, “Mentally Sailing,” she writes from a sailboat in Virginia.

Page likes to pursue mallards and wood ducks during the most challenging wing shooting waterfowl hunts — float trips in a two-man kayak at tributaries of the Black and South rivers. He also floats creeks and rivers for gray squirrels.

He owns 37 acres he partially cleared and developed for turkey and quail hunts.

Unseasonably warm weather has curtailed waterfowl migrations, but Page manages to find teal, wood ducks, mallards, widgeon, gadwall, ringneck and black ducks “but the main ducks are woodies.”

WEATHER DEPENDENT

The recent problem has been weather. In the past, northeast winds pushed waterfowl to North Carolina on 7-year cycles.

“One year, duck movements would be good, then slowly decline,” he said. “But this (cycle), it got bad and never got better. The past 5 years have been the worst I can remember.”

Friends in Canada have told him the weather’s been so warm, ducks have remained in the north.

“We need good weather fronts and a few nor’easters to push ducks down the east coast,” Page said.

Waterfowl also short stop at Eastern Shore (Maryland and Virginia) grain fields. If ducks, geese and swans reach eastern N.C., they set their wings at private impoundments.

“So many people are building impoundments and charge \$50,000 to \$100,000 a year for memberships and \$550 a day for non-members,” he said.

But Page would rather pursue waterfowl the old-fashioned way, interacting with nature in a kayak on a stream and showing clients a better way.

Two ways exist to do that — when weather is dry, rivers shrink from bank to banks. But ducks still swim there for food during the day and for safety at night.

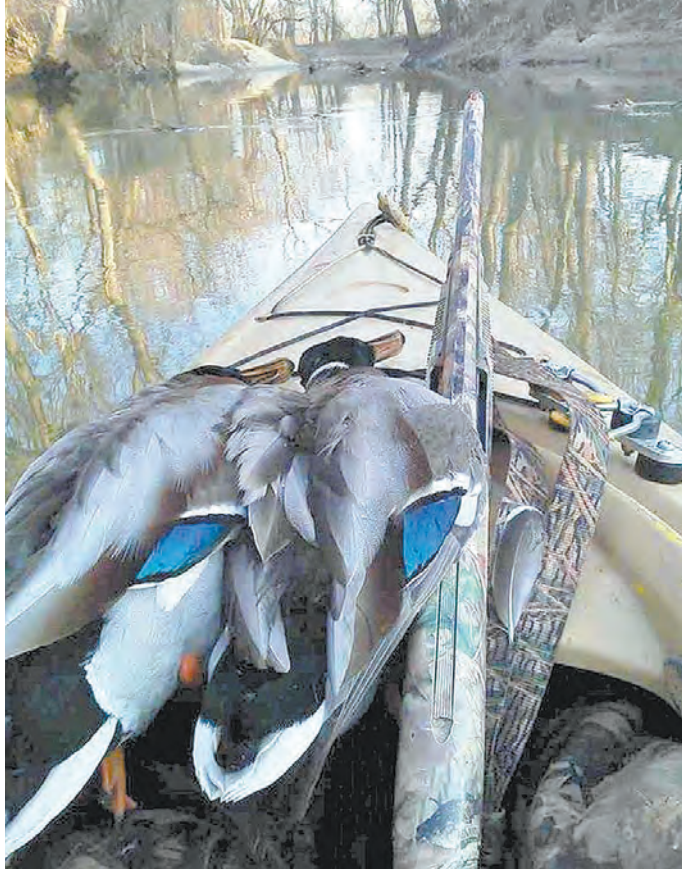
TEAMWORK

Small streams concentrate ducks. A two-man kayak is a perfect way to glide close to them, with two hunters sharing time in the front gunner’s seat.

“You’ll come around a bend in a river or stream with a blow-down ahead, and you might have 15 or 20 woodies — or just a pair — sitting behind a tree,” he said. “That’s when it requires teamwork to be successful. If the kayak must turn left ahead after you see or hear ducks, the driver must turn the kayak to the right so the hunter with the gun can face left where the ducks are.”



Page makes his calls from a variety of wood, most of which he harvests himself. **OPPOSITE PAGE:** A two-man kayak is the perfect craft for Page’s old-style way of waterfowl hunting.



THE BIG FREEZE

The other opportunity occurs when the mercury drops enough to freeze streams from banks toward the middle with an open channel between the ice.

“That’s where the ducks must be,” Page said. “They don’t walk on ice if they can avoid it.”

Then it’s just a matter of hunters remaining quiet and floating down a channel until getting near ducks.

“When ducks flush, they go straight up and are gone like rockets,” Page said.

Needless to say, shotgun-toting hunters must have quick reactions.

Page eschews a trolling motor for his 16-foot Wilderness Systems kayak, opting to paddle instead.

“It’s quiet, easy to maneuver, and won’t tip,” he said. “You can’t tip it over. It’ll also slide over logs, which you can’t do with most johnboats.”

A kayak, stream and jump-shooting seem made for each other.

“But, like any wildlife, sometimes ducks are there and sometimes they aren’t,” Page said.

Besides that, roast duck or duck l’orange makes a tasty main course. ■



Craig Holt of Snow Camp, N.C., has been an outdoor writer for almost 40 years, working for several newspapers, then serving as managing editor for North Carolina Sportsman and South Carolina Sportsman before becoming a full-time free-lancer in 2009.

LEARN TO LEAD >

Slowly moving water also makes retrieving downed birds fairly easy. Hunters don’t have to worry about dead ducks floating away.

THE NEW **ARGO 2021**

AURORA 950 SX 8x8
IS HERE.



GO
ANYWHERE



© 2021 ARGO XTV. Riders must wear an approved helmet, eye protection, protective clothing and when operating in water always wear a personal flotation device. Use handholds and stay completely inside the vehicle. Never engage in stunt driving. Along with concerned conservationists everywhere, ARGO® urges you to respect public and private lands. Ride only on designated areas or trails. Preserve your future riding opportunities by showing respect for the environment, local laws and the rights of others when riding.

VISIT **BOST ARGO ATV SALES**

6540 HWY 152 EAST • ROCKWELL, NC 28138 • 704-279-5736 • WWW.ATVARGO.COM

Proper shot technique comes in handy when hunting mallards like this one.



LEARN TO LEAD

Most waterfowl and upland game-bird hunters have developed a wing-shooting method that helps them down fast-flying game birds.

It's mostly an instinctive feeling, with some rules to follow that can make it easier and more successful (see the video at <https://www.Facebook.com/LeaningTreeGameCalls/videos/745522450044622>).

Alan Page, a veteran outdoorsman/hunter and owner of Leaning Tree Game Calls, has developed his own system that may ring bells for good wing-shots.

It's basically how to establish a proper lead for a flying game bird. "It works for me on everything, from quail to ducks — every time," Page said.

To visualize the method:

(1) Put three upright shotgun shells about 10 inches apart on a deck's railing.

(2) Stand back about 10 to 15 feet and look at the center shell (that represents the bird) while pointing an unloaded shotgun muzzle 10 inches to the left or right of the center shell. The left or right shell represents the direction the bird is flying.

(3) Now swing the shotgun (mounted to your shoulder) right or left until the muzzle matches the same speed as the bird is flying — then pull the trigger.

(4) You will have simulated dropping a flying bird by giving it the proper amount of "lead."

Now game birds almost never fly nicely and horizontally left or right. They may dip down, up or angle toward or away from a hunter.

In that case, remember to look at the 10-inch space in front, below, above, etc., of the bird and swing the shotgun muzzle until your swing matches the speed of the flying bird. Then pull the trigger.

Think about this: if a bird is approaching directly, the 10-inch lead will appear to expand from small to larger, even though the bird is closing the distance. When it's directly overhead, the 10-inch muzzle lead actually will be its largest. This is the toughest wing shot.

Conversely, if a bird is flying away from you, the angle you see appears to be getting shorter but it's actually increasing. So this 10-inch rule angle accounts for that greater distance from the gun's muzzle.

In either case, shoot before a bird is out of gun range and shot-shell pellets will intersect its path. ■

SPORTSMAN SHOWCASE ➤



HYPERXP405™ ONLY \$599.99

YOU CAN STICK YOUR HEAD UP A DEER'S ASS
BUT WOULDN'T YOU RATHER TAKE THE

PROCESSORS WORD FOR IT?

YOU CAN PAY A LOT MORE FOR A CROSSBOW,
BUT THE DEER DON'T GET ANY DEADER.

We built the HyperXP405 around the small diameter HyperFlite arrow. Barnett is the first crossbow company to improve the "ammo" in our category by introducing small diameter arrow technology into the crossbow platform. HyperFlite's provide numerous advantages. Deeper penetration, less wind drift, increased durability, and delivery of maximum kinetic energy.

25% MORE PENETRATION
WITH HYPERFLITE ARROWS VS. STANDARD DIAMETER ARROW



*SHOT FROM 50 YARDS INTO CLEAR BALLISTIC 20% GELATEN NATO BLOCK



barnettcrossbows.com

MAGLITE XL50 LED SPECTRUM RED

Hunters walking in darkness will have no problem dodging spider webs, fallen limbs, briars and mudholes when using the XL50 LED's red beam, which provides greater contrast to illuminated objects.

The red LED also reduces eye strain, so even long walks are no match. Using night vision technology? That's not a problem either, as this light does not interfere with it.

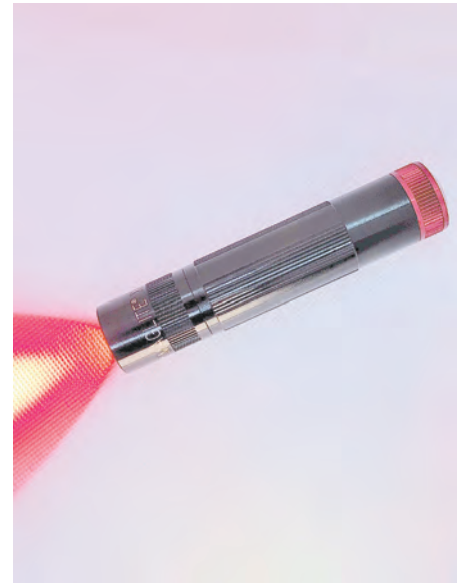
This compact light is 4.8 inches long, weighs a scant 3.7 ounces, fits easily in a pocket, bag or glove box and puts out 114 lumens, with a peak beam intensity of

4905cd and a beam distance of 153 yards. The aluminum alloy housing is water resistant and drop resistant up to 3.3 feet.

Powered by three AAA batteries, the XL50 runs at full power for 6½ hours, so long tracking jobs or lengthy walks to the truck after the sun sets are no big deal. The low-powered setting keeps it going for a whopping 24 hours.

With a push-button tailcap, the XL50 features a beam that is focusable from ultra-narrow to flood-light wide.

For more info, visit: maglite.com



GREY MAN TACTICAL HUNTING RACK

Your hunting gear has never been more accessible than it will be with the Seatback Hunting Gun Rack RMP Package from Grey Man Tactical.

This unique mounting system keeps your gun, binoculars, knife, flashlight – you name it, and it's got a secure place to fit on this panel that attaches easily to the rear of any vehicle's front seat.

Crafted of injection molded, glass-filled nylon, the sturdy panel is 2 inches thick, weighs 60 ounces, and has numerous hooks, loops, clamps and straps, keeping your gear safe

and secure while driving, but ready to quickly deploy once at your desired location.

This rack will serve you throughout the year whether you're deer hunting, waterfowling, small-game hunting, shooting sporting clays or going to the rifle range.

Transporting and keeping your hunting gear organized and ready for use has never been more convenient.

For more info, visit: greymantactical.com

SENECA DRAGON CLAW COMBO

Here's a powerful big bore PCP airgun combo that includes everything a hunter needs to humanely kill coyotes, raccoons, deer, wild hogs and more.

The Seneca Dragon Claw shoots .50-caliber projectiles and gets 230 pounds of muzzle energy. Fire the included Air Venturi Air Bolts at an even higher muzzle energy level, with deadly accuracy thanks to the gun's rifled barrel.

Aside from the rifle, which has a classic look and just the right amount of weight in hand, the combo includes six .50-caliber Air Bolts, three SenX Double Whammy broadheads, 100 Seneca .50-caliber round balls, a Mantis 4-12x40 scope, a UTG Tactical bipod, an arrow/bolt quiver,

a broadhead wrench, and a premium Air Venturi Nomad II portable compressor, allowing you to keep the airgun filled at home or in the field.

Two large air reservoirs allow you to

spend more time hunting or shooting and less time airing up.

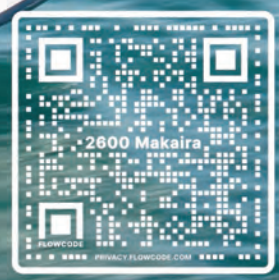
For more info, visit: pyramydair.com



BLUE-WAVE BOATS

The only question you'll ask yourself is
which way should I go.

2600 Makaira
#MYkaira



www.bluewaveboats.com

SEE YOUR LOCAL DEALER FOR SPECIALS

OFFERED BY



A.K. MCCALLUM CO.
715 Ramsey St
Fayetteville, NC 28301
910-483-6804
akmccallumco.com

BAY RACER MARINE
213 US Highway 70 West
Havelock, NC 28532
252-447-2277
bayracermarine.com

BOAT DOCK MARINE
5981 NC Hwy 8
Lexington, NC 27292
336-357-5906
boatdockmarinenc.com

BOATER'S MARINE
1309 Skyway Dr.
Monroe, NC 28110
704-282-0967
boatersmarinenc.com

BRAZDA MARINE
2645 Highway 24
Newport, NC 28570
252-240-1600
brazdamarine.net

BROAD CREEK MARINA
18 Simmons Road
Hilton Head Island, SC. 29926
843-681-3625
broadcreekmarinahh.com

BROWN'S MARINE INC
1825 Anthony Rd
Burlington, NC 27215
336-229-5784
brownsmarinenc.com

BROWN'S RV SUPERSTORE
30049 Hwy 151
McBee, SC 29101
(833) 209-7274
brownsvrsuperstore.com

CAPE ROMAIN MARINE
10129 Hwy. 17 N.
McClellanville, SC 29458
843-887-3330
caperomainmarine.com

CAROLINA INBOARD
1225 Bickley Road
Irmo, SC 29063
803-781-1024
carolinainboard.com

CAROLINA OUTBOARD
220 NC Hwy 210 West
Hampstead, NC 28443
910-319-0506
carolinaoutboard.com

**CAROLINA WATER
SPORTS & MARINE**
114 Days Inn Drive
Mooresville, NC 28117
(704) 663-4500
carolinawatersportsmarine.com

CHATLEE BOAT & MARINE
2615 Jefferson Davis Hwy.
Sanford, NC 27330
919-775-7259
chatleeboats.com

COASTLINE RV & MARINE
2340 S. Highway 17
Murrells Inlet, SC 29576
843-458-3999
coastlinervrentals.com

COUICK'S MARINE
3613 Providence Rd S.
Waxhaw, NC 28173
704-843-2155
couicksmarine.com

COVE 2 COAST MARINE
1821 Lake Murray Blvd.
Columbia, SC 29212
803-814-1514
cove2coastmarine.com

COVE 2 COAST MARINE
2476 Savannah Hwy.
Charleston, SC 29407
843-212-3915
cove2coastmarine.com

DOC'S MARINE
5803 Icard Ridge Rd
Hickory, NC 28601
828-598-0637
docsmarinenc.com

DOSS MARINE
1720 Chapin Road
Chapin, SC 29036
803-345-1001
dossmarine.com

DOWN EAST MARINE
455 Highway 70 Otway
Beaufort, NC 28516
252-728-5817
downeastmarine.com

ED WATKINS MARINE
3333 Hwy 16N
Denver NC 28037
704-483-2628
edwatkinsmarine.com

FORT MACON MARINA INC
417 E FT Macond Rd Pob 370
Atlantic Beach, NC 28512
252-726-2055
fortmaconmarina.com

GRAHAM MARINE
318 W Harden St
Graham, NC 27253
336-227-8711
grahammarinesales.net

GUNNELLS MARINE
102 Rock Church Rd NW
Greenwood, SC 29649
864-223-2275
gunnellsmarine.com

J & J MARINE
2530 Badin Road
Albemarle NC 28001
704-983-867
jandjmarinesales.com

**JET JOE'S MARINE
SALES AND SERVICE**
565 Satterwhite Point Rd.
Henderson, NC 27537
252-430-6209
jetjoesmarine.com

JIMMY'S MARINE
6685 Beach Drive SW
Ocean Isle Beach, NC 28469
910-575-3600
jimmysmarine.com

JOHNSON'S MARINE & OFFROAD
1782 Old Edisto Dr.
Orangeburg, SC 29115
803-531-1655
johnsonmarineandoffroad.com

LONG'S FISHING & MARINE
5401 HWY 24
Anderson, SC 29625-6020
864-287-9064 • Fax 864-287-2965
longs-marine.com

MARINE 360
1925 Johnson Marina Rd
Chapin, SC 29036
803-749-2360
marine360sc.com

MARINE SERVICE PRO, INC.
8210 River Road SE
Southport, NC 28461
910-363-4725
marineserviceprosinc.com

MARINE WAREHOUSE
3881 Savannah Hwy
Johns Island, SC 29455
843-974-5353
marinewarehousecenter.com

MARINE WAREHOUSE
6921 Market Dt
Wilmington, NC 28411
910-799-1277
marinewarehousecenter.com

**MARTIN'S
PERFORMANCE BOATING**
9345 Macedonia Church Rd
Prosperity, SC 29127
803-364-2162
martinsmarine.com

PRECISION MARINE INC
5201 US Hwy 70 E
Goldsboro, NC 27534
919-751-1199
precisionmarineinc.com

RADCLIFFE MARINE
865 US-264 Bypass
Belhaven, NC 27810
(252) 943-3923
radcliffmarine.com

ROCK OUTDOORS
7440 NC Hwy 8
Lexington, NC 27292
336-793-8710
rockoutdoors.com

**ROGUE MOTION BOAT SALES,
SERVICE & STORAGE**
65 Sycamore Ave
Charleston, SC 29407
843-633-1433
roguemotion.com

SEA ISLAND MARINE
1105 Rodgers Street
Beaufort, SC 29902
843-524-7272
seaislandmarinebeaufort.com

SOUTHSIDE OUTDOORS
1077 Clarence Coker Hwy
Turbeville, South Carolina 29162
843-659-2628
southsideoutdoors.com

STRICKLAND MARINE CENTER
4520 Hwy 24
Anderson, SC 29626
864-225-0145
stricklandmarine.com

STROUD AND SON MARINE SALES
1897 Ocean Hwy
Edenton, NC 27932
252-482-8938
stroudandson.com

SUTTON MARINE
914 park avenue southeast
aiken, sc 29801
803-648-6141
suttonmarine.com

TRI-COUNTY MARINE
1203 Premier Road
Granite Falls, NC 28630
828-728-4845
tricityboats.com

WEBSTERS MARINE INC
5974 N Okatie Hwy
Ridgeland, SC 29936-8248
843-987-6663 • Fax 843-379-2628
webstersmarine.comw

Not all North Carolina and South Carolina American Suzuki Motor of America Inc. marine dealers are represented in this advertisement.

THE
ULTIMATE™
OUTBOARD MOTOR

SUZUKI

ADVANCEMENTS

ABOVE AND BELOW THE SURFACE

INTEGRATED STEERING - IMPROVED LOWER UNIT

Suzuki's new integrated steering, available on our flagship DF350A and 300B dual prop outboards, eliminates the need for external steering cylinders. This makes for an easier rigging process and a cleaner look in the motorwell. Couple that with a redesigned and improved lower unit, the new DF350AMD and DF300BMD are sure to make waves.



5 YEAR LIMITED WARRANTY applies to qualifying purchases of Suzuki outboard motors sold and delivered to the retail purchaser, for pleasure (non-commercial) use only, from April 1, 2021 through March 31, 2023. See Suzuki Limited Warranty for additional details. Suzuki, the "S" logo, and Suzuki model and product names are Suzuki Trademarks or ®. Don't drink and drive. Always wear a USCG-approved life jacket and read your owner's manual. © 2022 Suzuki Marine USA, LLC. All rights reserved.

LOWCOUNTRY

BULLS & PUPS

HERE'S HOW TO
CATCH FALL REDFISH,
BIG AND SMALL.

By Phillip Gentry



A

According to Redfin Charters guide Justin Carter, November can be a month filled with either bull redfish or juvenile puppy drum coming over the side of the boat. Or perhaps even both. It just depends on the weather.

Carter said the last few years, temperatures have stayed moderate throughout the Charleston area well into December, keeping water temperatures at a balmy 70 degrees all month.

After having targeted adult redfish for most of the summer and into the fall, Carter said it's very possible to follow large schools of fish as they head offshore. Most of this action takes place out to 60 feet of water, and generally less than 10 miles off the coast.

"If these huge schools of bull reds are your goal, expect to spend a lot of time riding and looking for them," said Carter. "There's not a lot of rhyme or reason to their movement. Sometimes they'll hang out around the wrecks. And that's generally where I start looking."

Carter said the schools often stay submerged around the wrecks but will come to the surface in large numbers when they get excited. Just like fishing schools inshore, he doesn't like to get too close to the school when he's trying to catch them.



"My go-to bait is a 1-ounce jighead paired with a Z-Man DieZel in either 5 or 7 inch size," he said. "When you find them up on the surface, they'll hit about anything. But I want something I can throw a long distance with accuracy so I can land the bait several feet out in front of the school and work it back to them."

GET 'EM INSHORE TOO

Back inshore, Carter said anglers can expect the redfish bite to get easier as the available supply of bait runs out. This creates more competition for the available food supply.

"Typically the mullet run is over and the shrimp are out of the creeks by November. So you can expect the bite to be very aggressive," said Carter. "Both trout and redfish are feeding hard to get ready for the coming winter."

He said don't look for any tightly schooled redfish yet. That won't start happening until later in December. Right now though, he expects to find loose groups of two, three or four fish on nearly every point, every creek mouth and every boat dock, provided it's got the right elements to hold fish. The common factor is they're almost all shallow water situations.

"I get a lot of information by watching the shoreline, looking at what the birds are doing," he said. "If you see several seagulls just sitting on the bank facing the water, they're there for a reason. Probably because redfish are pushing what little bait they can find up into the shallows to feed. And that's an advantage for the birds to get in on the action."



As November progresses, large schools of bull redfish move off the beach into water as deep as 60 feet. Opposite page: Guide Justin Carter said anglers can find bull redfish in deeper waters, and puppy drum in the backs of inshore creeks this month.



Another good inshore scenario is a choke point. He describes a choke point as an area where you have a wide shallow creek flow that gets narrowed down by an oyster rake or sandbar on either side with water pouring through.

To target this area, he will ease in from the downstream side and pole to where his clients can reach the rushing water.

“The good thing is your presentation doesn’t have to be so precise because the reds will come out and get the bait,” he said. “We usually start by throwing Chatterbaits or a 3-inch paddletail until the fish wise up to what’s going on and the action slows down. When they stop hitting artificials then it’s time to hook up the popping corks and float a live shrimp or mud minnow through the chute and get the bite started again. I’ve had whole ½-day trips where we sat in one spot and caught fish as quick as my clients could get the next cast out to them.”

On a final note, Carter said don’t overlook the high tailing tides that will occur around the full and new moons. The mullet may be gone, but there are still enough fiddler crabs bumping around in the grass to get redfish interested.

“Again, the good thing here is the fish are hungry. It’s that fall drive to pack it on. So any decent cast or presentation is likely to get looked at because the fish are just not as spooky as they would be during the winter and spring.”

CATCH-AND-RELEASE

In order to understand how catch-and-release impacted the state’s redfish populations, the South Carolina Dept. of Natural Resources began a Redfish Catch-and-Release Study to determine how redfish were being caught and how they were released in order to make proper recommendations to conserve the fishery amid an ever-increasing expansion of redfish as a targeted species.

The study involved surveying more than 1400 anglers on their redfishing preferences. Ninety percent of anglers released fish that they caught. Seventy percent used live or natural baits, and almost 47 percent used standard “J” hooks compared to 34.5 percent who used circle hooks.

The second phase of the study involved field studies of local volunteer guides in the Georgetown, Charleston, and Beaufort areas.



Phillip Gentry is a freelance outdoor writer and photographer who says that if it swims, walks, hops, flies or crawls he’s usually not too far behind.

CHOOSE THE RIGHT HOOK >

With food sources dwindling, redfish become much more aggressive in November.





New & Used Boat Sales - Consignment - Electronics & Accessories



Coastal Skiff 212

Coastal Skiff 171

Your Area Coastal Skiff & Coastal Flats Dealer



RELATIONSHIP BASED SERVICE YOU CAN TRUST!

13500 Hwy, US-70 BUS • Clayton, NC 27520 • 919-659-5096

www.carolinaboatco.com



CHOOSE THE RIGHT HOOK

In two separate studies, one involving small hooks in shallow water and another involving larger hooks in deep water, head-to-head comparisons were made between “J” hooks, offset circle hooks and non-offset circle hooks. Fish that were caught in the jaw, forward of the throat plates, were released on site while fish that were “gut hooked” were monitored at the state’s mariculture center in holding ponds for 48 hours.

Conclusions of the study showed that non-offset circle hooks gut hooked the least number of fish in both studies (sub-adults and adults). Offset circle hooks were intermediate. J-hooks gut hooked the most fish in both studies.

Despite the fact that offset circle hooks gut hooked an intermediate number of fish, the largest percentage of these fish died as a result of hooking injuries. When fishing for adult red drum, non-offset circle hooks caught almost twice as many fish as J-hooks did. They also gut hooked substantially fewer fish than J-hooks did. Evidence was overwhelming that the best hook to use when releasing red drum is the non-offset circle hook. ■

BEST PRACTICES TO HELP REDFISH

Bill Roumillat, Fisheries Biologist for the South Carolina Dept. of Natural Resources who oversaw the agency’s Catch-and-Release Study, offers important advice for catch-and-release redfish.

Use appropriate tackle (at least 12-pound test fishing line) and bring the fish in quickly. Fighting a fish to exhaustion may increase its possibility of dying.

Use non-offset circle hooks. This study has shown that circle hooks catch sub-adult red drum in the jaw more than 90 percent of the time. Mortality is 1/3 of that with either offset circle hooks or J-hooks.

Handle the fish only with wet hands. Use a release tool such as needle-nosed pliers to remove the hook from the mouth of the fish.

If the point of the hook is lodged in the far back of the mouth or is beyond the crushing teeth in the back of the throat, leave the hook in place and cut the leader. A large percentage of these fish will survive.

For more information on the Red Drum Catch-and-Release Study, visit the agency’s website at www.dnr.sc.gov/marine/mrri/insh_fish/reddrum/reddrumportal1.htm. ■

Studies confirm non-offset circle hooks are the best to use when practicing catch-and-release.



POWER YOUR PURSUIT™ WITH ADVANCED LITHIUM MARINE BATTERY TECHNOLOGY



We design and manufacture lithium iron phosphate batteries that power your pursuit of fishing with confidence and trust.

- Get More Power For Your Boat Without Sacrificing Space
- More current, Capacity, and Durability In a Smaller Size
- Stay In Control Of Your Boat's Power
- Unmatched Durability and Safety
- Proven Reliability and Performance
- All The Power You Need, At a Price You Can Afford



ABYSS BATTERY

855-719-1727

www.abysbattery.com



Many different species, including grouper, are on the menu for offshore anglers this month.



Chris Burrows

A LITTLE BIT OF EVERYTHING

MULTIPLE SPECIES HIGHLIGHT OFFSHORE TRIPS THIS MONTH

For many, the end of the king mackerel bite on Carolina beaches, which neatly coincides with the end of king mackerel tournament season, it's time to get the center console winterized and put away until spring.

Those who follow that gameplan are often leaving themselves short. Some of the best fishing of the year can be had when early frost is on the ground. You just have to do things a bit differently.

The sustained cooling of the water on the beach generally pushes the bait and the predators that follow it offshore. This means a longer run to productive fishing.

To get the most satisfaction (not to mention meat in the box) on these late fall days, it pays to be ready to target different species on your trip. Be prepared with a set of live bait rods, enough stout bottom fishing rods to put one in

every angler's hand on the boat, and at least three 50-pound class trolling rods, spooled with plenty of braid and 80 to 100-pound topshots of mono. This allows you to take advantage of every opportunity you may encounter in the deep.

The first priority of one of these November trips is generally grouper, so loading up on live bait is a must. Instead of looking for a school of pogies to net, which can be hard to come by now, the best play is usually to stop at a nearshore AR and load up on cigar minnows.

As soon as you mark those "clouds" on the depth finder, send down two sabiki rigs and come tight on them as soon as they hit the bottom. If you're not bringing up multiple cigars at one time, reposition the boat over a denser "cloud." As long as you have found the right bait, it won't take long at all until you have five or six dozen in the livewell.

At that point, see if you can grab a few pinfish as well. Add tiny pieces of cut squid on the bottom hooks of the sabiki. If the pinfish are there at all, this will be almost automatic. With a dozen or so pinfish along with the cigar minnows, you should be set for the day. Point the bow offshore and head for your favorite grouper hole in the depth range of 100 to 120 feet.

WATCH THE COLOR

As you get offshore, pay close attention to the color of the water you are running through. In the depths that will be most



Chris Burrows began his charter fishing career out of Charleston and Georgetown, SC, but moved to Brunswick County, NC in 2005. He currently runs Wing & Fish Company in Shallotte and is involved with fisheries management at the federal level, but still fishes recreationally whenever he gets a free second.

productive, you can encounter clear, blue water or you may be in kingfish green water. A combination of the two with blended water or a hard edge isn't uncommon, either.

If you hit the warmer, blue water with several miles yet to go, it's a great time to slow down and troll high speed wahoo plugs on your 50-pound outfits all the way to your grouper hole. Three rods are all you can reasonably pull doing this, keeping whatever heavy plugs you prefer spaced out and the lines rubber banded to the reel handles or the first guide to create a quick, violent dropback/hookset coupled with an inexpensive strike alarm.

Some of the biggest 'hoos of the year come from doing exactly this. If this technique doesn't produce at first, keep the gear ready. Whenever you need to make a move, roll it back out again. It only takes a bite or two for high-speed trolling to dramatically increase the poundage you bring back to the dock.

GET A GROUPEE

When you get to the ledge or rock where you want to target grouper, getting the boat positioned and stopped right on top of the numbers is critical. And it's also going to take some time.

Whether you go with the tried-and-true anchor approach, or opt for the newer offshore trolling motor technique, the captain's hands are full trying to get the boat in the right spot. While this is going on, have someone fire out one of the largest cigar minnows on a live bait "stinger" rig.

Filling a balloon a quarter full with water and the rest with air, then clipping it to the main line about 12 feet above the wire leader, allows the current to carry the bait well astern of where it can tangle any effort you are making to anchor.

As you get more set up, you can introduce a second or even a third live bait the same way. Just keep them staggered well apart. Simply keep light drag on these reels with the clickers engaged, put the rods in the T-top, and forget about them. You'll know when you get bit. A king, wahoo, or even a sailfish may come calling while you are focusing on catching a grouper.

Dropping baits to the bottom for grouper means stout rods, heavy lines, big circle hooks, and tight drag. Hook a cigar minnow close to the tail and go straight down. Then engage the drag, getting the line tight.

When one of those rods doubles over, getting the grouper out of the rocks must happen immediately, or you will chafe or break even 130-pound mono leaders.

SWITCH IT UP

When the boat is positioned right, especially with the current restrictions on the different species of grouper, a limit can come quickly. You don't necessarily have to move when everyone catches their allotment, though. Vermilion snapper are often in the same spot, so sending down some cut squid on smaller tackle can give the fish box a bit of a

boost too. Or you can troll a bit farther offshore and try to augment that same box with a different flavor of grouper.

Typically, the gags will be the shallowest species found. Going deeper opens the door for reds, scamps, and a whole host of other types of some of the most delicious fish on the planet. Rock hopping combined with high-speed trolling is a fantastic way to catch a smorgasbord of seafood.

While you are maximizing your catch and your day on the water, don't forget that November (especially the latter part of the month) is a great time to see early season bluefin showing up on the Carolina coast.

The same 50-pound outfits make catching one of these giants possible, so long as you have plenty of line to handle the runs of these fish.

A quick switch to 100-pound, fluorocarbon "crank-on" leaders with Ilander heads and horse ballyhoo on 11/0 hooks will immediately put doing battle with a true giant in play. When you see bluefins busting on bait, you will immediately know what they are. Just make sure you have plenty of daylight left to play that game, so you don't have to run back through a tricky inlet in the dark.

Always make sure your permits are in order as well, in case you want to take one of these giants home. I'm not advocating keeping one, but if you do, you want to be sure that you are on the legal side of things when you get back to the dock.

It may not be summer fishing, but if you come prepared for what you may encounter offshore, there's no reason the action in November won't be just as hot and heavy. ■

SMALL CRAFT ADVISORY >

STAY LEGAL:

Bluefin tuna can make a strong showing toward the end of this month. Anglers targeting other species can take advantage of these big fish, but harvesting them requires the proper permits. Make sure you have the right paperwork and you'll be ready if and when these tasty tuna decide to bite.



Register as an AMSOIL Preferred Customer to receive:

- **Reduced Pricing** of up to 25% on every order.
- **Free Shipping** on orders of \$100 (\$130 Canada) or more.
- **Birthday Gift** of a \$5 coupon to help celebrate your day.
- **\$5 Back** with every \$100 you spend.
- **Exclusive Offers** throughout the year.
- **Free Membership** renewal when you spend \$500 or more.

Roger Farina • CALL (800) 781-8840 ext 1
tarheelsynthetics.com

Black's Camp

on the
Santee Cooper Lake System

Deep Water Access to Diversion Canal and Both Lakes...

Boat Launch is Protected From
Wind and Current.



THE STRIPED BASS ARE BACK!

Bait • Ice • Fuel Available

FOOD TO GO, ORDER ONLINE



Please
Call Us For
Campground
Lodging &
Guide Service
Availability

Cross, South Carolina 29436
(843) 753-2231
www.blackscamp.com

SMALL CRAFT ADVISORY

Phillip Gentry

Speckled trout are commonly found in backwater estuaries, large bays and inlets adjacent to the ocean.



PADDLING FOR SPECKS

Phillip Gentry

FALL STRATEGIES FOR SPECKLED TROUT

For a fish that looks like it might fall apart once it's out of the water, speckled trout are a ball to catch. And they put up a great fight on light tackle.

November is one of the best months to hook into some great speckled trout fishing because the fish tend to stack up in large numbers. And cooling temperatures puts more oxygen in the water, and more fight in the fish.

For coastal paddle boat anglers, speckled trout are both a staple and a prized catch. Speckled trout prefer the back bays and estuaries of the coastal Carolinas and this puts them within easy reach of an angler with a paddle in one hand and a rod in the other.

Any discussion of speckled trout fishing should start off discussing where to look to find them this time of year. Seasonal patterns for tend to be more subtle than other inshore species. But that doesn't necessarily make them easier to find.

A no-brainer for trout fishing year-round is to look around the edges of marsh grass. Some of the better locations are grass edges that have deep water within a cast distance of the grass.

For speckled trout, 7 to 8 feet is considered deep and low tide is a favorite among kayak anglers because it reduces the amount of water you have to search. Look for trout pushing bait up against the edge of the channel, but they'll be

near or right off the bottom.

LIKELY AREAS

Another no-brainer for trout fishing is to target creek bends, particularly near structure such as boat docks or pilings on the edge or even extending into the drop-off. Look at both sides, but typically the deepest edge of a creek bend will be the outside edge.

Another advantage to dock fishing is that any structure nearby or along the channel edge will also hold redfish and flounder.

Moving in no certain order, another angler favorite location to find speckled trout, particularly in the fall is at the intersection of a tributary and a main creek. Kayak anglers can anchor or stake out just downstream of the rip on a falling tide and catch fish in nearly any direction. The current creates a seam, or rip current, that's easy to see. In the fall it's usually better to focus on the shallower side of the rip unless a substantial weather front has pushed trout off the deeper side.

As the month and fall season progresses, kayak anglers may do better finding trout holding on the deeper side of the rip in a bigger creek. The rip may or may not be well defined, but the trout are often off on the deeper side of the current, looking for bait that's being washed out.

One of the big differences in the

Carolina coast versus other parts of the country is the pluff mud, which runs pretty much from just north of Georgetown all the way down to the Georgia border and then some. It's a unique ecosystem. The muddy bottom tends to limit the amount of speckled trout anglers catch in some areas, because the water clarity over pluff mud is rarely as clear as what's found on a sandy bottom. Being mostly sight feeders, clear water is a definite advantage for speckled trout.

Regardless, speckled trout thrive in the muddy environment because it is very nutrient rich and creates a lot of feeding opportunities for baitfish and, in turn, for predatory fish. The two terrains fish somewhat similarly but also different at times.

Fall speckled trout fishing along the Carolina coast means locating ambush points where trout will hold and dart out into the current to attack bait, then move back into the lee to wait on the next passing opportunity. ■



Phillip Gentry of Waterloo, S.C., is an avid outdoorsman and said if it swims, flies, hops or crawls, he's usually not too far behind.

GO WITH THE FLOW

Many kayak anglers relish the cooler fall weather and look for the trout bite to turn back on as the water starts creeping back down into the low 60s around the middle to the end of October. Coincidentally, the mass exodus of baitfish, primarily shrimp and menhaden, from the marshes tends to spur feeding on a more frequent basis that kayak anglers were used to seeing in the summer.

Regarding trout-holding structure, even newcomers to inshore kayak fishing in the Carolinas can quickly learn what makes it good for fishing simply by being patient and observing the surroundings.

One of the benefits of so much tidal fluctuation is that when the tide goes out, it uncovers the oyster bars, ditches, and other structure that fish will hold on just as soon as the water returns. Anglers can return to those areas and better understand how fish will relate to them.

An average tide on the South Carolina end is 5 feet and near the Georgia line, it is upwards of 7 or 7 ½ feet of total water movement. When that happens, it creates a lot of current but also gives anglers unique opportunities to see the underwater environment at the end of each tide cycle. It's much easier to see what's out there, what fish are laying next to, and the structure such as drop-offs, channels, and points.

On the northern end of the Carolinas, the grass flats create an entirely different look – lots of bottom structure where trout can hide anywhere and ambush prey at any point. Surprisingly, many of the same trout fishing tactics work equally well on either end of the Carolinas with a few modifications. ■

BEST BETS

NORTH CAROLINA

WHAT — Speckled Trout

WHERE — Kitty Hawk Bay, Inshore Northern Outer Banks

HOW — Fish popping corks, topwater lures or live baits around the concrete pilings that line the deeper channel waters on the Hwy 12 and 64 bridges early in the day. Then concentrate your fishing efforts using topwater baits and popping corks along long points, grass beds, or bridge funnels over the grass beds.

LAUNCH — A public launch is located at mile post 6.5 on Bay Dr. From Kitty Hawk Bay. Also try dump-in points near the Wright Memorial Bridge crossing from Kitty Hawk to Point Harbor. Two additional bridges go to and from Manteo at Hwy 64.

INSIDER TIP — Trout tend to school up in tighter groups as the water temps cool off, so locating a single fish means most likely others are very close by.

SOUTH CAROLINA

WHAT — Speckled Trout

WHERE — Murrells Inlet, SC

HOW — Target trout in the backwater estuaries, large bays, and inlet adjacent to the Atlantic Ocean. Try casting live or shrimp-imitating lures to grass or shell banks. Trout also favor water along shell banks that reach out from points, especially creek mouths.

LAUNCH — Public access is available at Murrells Inlet's Public Launch on US17 or at Morse Park Landing.

INSIDER TIP — It's hard to beat fishing live shrimp under a popping cork. But if the fish seem finicky, try using only a split shot rig, minus the cork.

CAPE FEAR SPECKS ➤

Phillip Gentry



The diversity of habitat across the Carolinas varies greatly, but they all hold trout.



SPECKS IN THE LOWER CAPE FEAR

Speckled trout are thriving and feeding heavily

Capt. Stu Caulder shows off a speck caught in the Lower Cape Fear area.

After four winters without a deadly freeze and/or stun event in inland waters, the speckled trout population in the lower Cape Fear River is thriving. The population includes a range of sizes from specks spawned this year to senior citizens of 5 years plus, and 5 pounds plus. Unless a weather event changes things significantly, they'll all be feeding aggressively during November as the water cools and the last of the bait-fish trickle from the creeks and marshes into the river and out to the ocean heading south.

In this 24-mile stretch of river, the salinity varies, as fall storms occasionally add lots of rainwater and the water turns brackish. It's usually salting back up in November and many fish, especially speckled trout, seem to like this.

Capt. Stu Caulder of Gold Leader Fishing in Wilmington (910-264-2674) fishes this area regularly and said specks of all sizes are in the creeks and bays. But many larger trout prowl the river seeking schools of 3- to 5-inch menhaden that roam the river all year. These are ideal snacks for citation trout and they are often found around the islands in the river.

Many of these islands were created by dredging projects to dig and maintain the Cape Fear River Ship Channel. They may be sand, a mixture of mud and sand, and may also contain rocks and ballast stone from early sailing ships. The islands create shelter and attract bait. The abundance of bait brings fish, particularly large fall trout, to feed.

"Around these islands are great places to fish," Caulder said. "In addition to trout, we catch redfish and stripers, plus even a few

flounder that stay for the winter.

"I carry a variety of rods rigged with different lures because you never know what you'll see or where the fish might be. The structure around these islands varies from sandy gentle sloping banks, to grass lines, to steep rocky drops. And shallow flats are nearby, with sand, mud and/or rock bottoms.

"I head out rigged with a topwater, a suspending bait, a slow sinking bait and a bait that will sink quickly," Caulder said. "I like MirrOlure Top Pups and She Pups for fishing topwater, MirrOlure MirrOdines for suspending lures and switch to DOA shrimp, paddletails and jerkbaits for fishing the bottom. Trout will usually like one of them." ■

SC'S CENTRAL COAST

Specks and reds catch fire

T By Brian Cope
 he central coast of South Carolina is full of fertile fishing grounds that get a fraction of angling pressure as the rest of the coast. That's great news for anglers like Capt. Stephen Flook of Unashamed Adventures (864-430-8830).

"Especially this month when fewer anglers are on the water anyway. I can spend an entire day out here and not see another fishing boat. And the redfish and speckled trout fishing is about as good as it gets, especially for anglers casting artificial lures," said Flook.

He equates fishing for these species here this time of year to what most people consider as bass fishing. His favorite lures to throw include Z-Man DieZel MinnowZ in beer run color. Casting this lure to holes that are slightly deeper than surrounding water is his main tactic. He and his clients catch both specks and reds this way.

When the tide cycle lines up so that incoming tide occurs as the sun is rising, Flook said that's a good time to begin the day casting walk-the-dog type lures. This draws plenty of strikes from speckled trout.

"It's an exciting way to fish, with lots of blow-ups that can get the heart pounding," he said.

This bite can last for an hour, or for much longer, depending on the day's conditions.

"Once the sun gets high enough and bright enough, the topwater bite generally slows down. But if it's a cloudy, overcast day, we can continue catching them on surface lures much longer," he said.

As the sun brightens up, the DieZel MinnowZ really shines. Casting it on a 3/8-ounce jig allows Flook's clients to make long casts, probing those deeper pockets from a safe distance without spooking the fish.

To specifically target specks, Flook said those deeper holes next to oyster mounds are gold. For the redfish, however, he casts to the shallower waters in those same areas and in the shallower flats. They're looking for safety in numbers as they move with the tide to stay out of reach of porpoises.

"This is one of my favorite months for specks and redfish. They are very aggressive on artificial lures, fewer boats are on the water, and the weather isn't unreasonably hot or cold," he said. ■

Capt. Stephen Flook said specks and redfish are aggressive this month.



Brian Cope

THE REEL OUTDOORS

EMERALD ISLE, NC / 252 354-6692

• BAIT • TACKLE • MARINE • APPAREL



TOURNAMENT TACKLE



Columbia
Trivina stoffe since 1938



SHIMANO



STCROIX



the dude



AET REELS



Marsh WEAR



PENN



YETI COOLERS



HOOKUP LURES



AFICO



HUK PERFORMANCE FISHING



Star Rods



ZIPP



COSTA



GRUNDENS



XTRATUF

www.thereeloutdoors.com



■ By Terry Madewell

**STAY PUT FOR
PRIME CATFISH
ACTION.**

**ANCHOR DOWN FOR
CHILLY
WATER
BLUES**

Drift fishing, or “dragging,” has become the exclusive fishing technique for many catfish anglers. And while highly effective, it’s not an all-inclusive, catfish-catching strategy.

Fishing from an anchored position is an under-utilized, and not fully understood, technique. Fishing while anchored can be effective year-round, but it’s a prime cold-weather tactic from November through February and excels when

TARGETING BIG BLUE CATFISH.

Jeff Manning from Gastonia, NC is a catfish tournament angler with multiple wins and Angler of the Year hardware from catfish tournament trails in the Carolinas. He’s earned the tournament-fishing moniker of “Anchorman” for good reason.

“Some fishermen have the mistaken idea it’s a lazy method of catfishing because they think it’s a random method of fishing,” Manning said.

“It’s actually the opposite. It’s not random in any sense and involves a highly refined strategy,” Manning said. “I primarily anchor-fish but only drop anchors when and where I believe a lot of catfish are congregated.

“When I set up on the right target, I often don’t get all my rods out before the tips are buried three-eyes deep into the water by an aggressive blue catfish.”

Manning said the key to finding the right spot to anchor is about catfish and chow.

He employs electronics to find forage and catfish clustered together. Forage may vary among individual lakes in

the Carolinas, but threadfin and gizzard shad, blueback herring and white perch are all attractive to catfish.

“During much of the warm part of the year, forage is scattered throughout the lake and maybe 100 percent of the forage may be scattered over 80 percent of the lake,” he said. “During late fall and winter, I think 80 percent of the forage may be packed into 10 percent of the lake. That 10 percent is the crucial area to fish and is one reason why anchoring can be so productive. Lots of fish in a small area.”

FIND FORAGE FIRST >



Guide Spencer Hodges battles a big blue hooked from an anchored setup using cut bait. **OPPOSITE PAGE:** An anchored setup can produce fast action and both of these big blues were hooked at the same time.

Terry Madewell

FIND FORAGE FIRST

“When I find forage, I then look for the electronic signatures of big catfish,” he said. “I search for multiple fish in a specific area such as a channel ledge, saddle or hump. It requires diligence to search. But when I mark multiple big catfish, I’ll start fishing.”

Manning said his setup is precise and as he graphs an area, he mentally marks where catfish are located, such as at the base of a ledge on top of a hump or at any specific location. He’ll anchor so his boat is positioned to allow him to target those specific places.

“That’s a reason a good anchor setup is crucial because I literally cast some of my rigs to specific stumps or logs that have big fish marked beside them,” he said. “I cast baits to the base of a drop, right where it bottoms out. Even in deep water, that’s where the forage will be funneled and the biggest catfish will be waiting.”

“This is exciting because when I cast a bait right in front of a big blue catfish, instinct takes over and they often inhale it on a dead run,” Manning said. “When this occurs, it often stimu-

lates other big blues to become aggressive and the action can literally get out of hand, in that we have more fish hooked than hands to hold rods.”

TARGET SPECIFIC AREAS

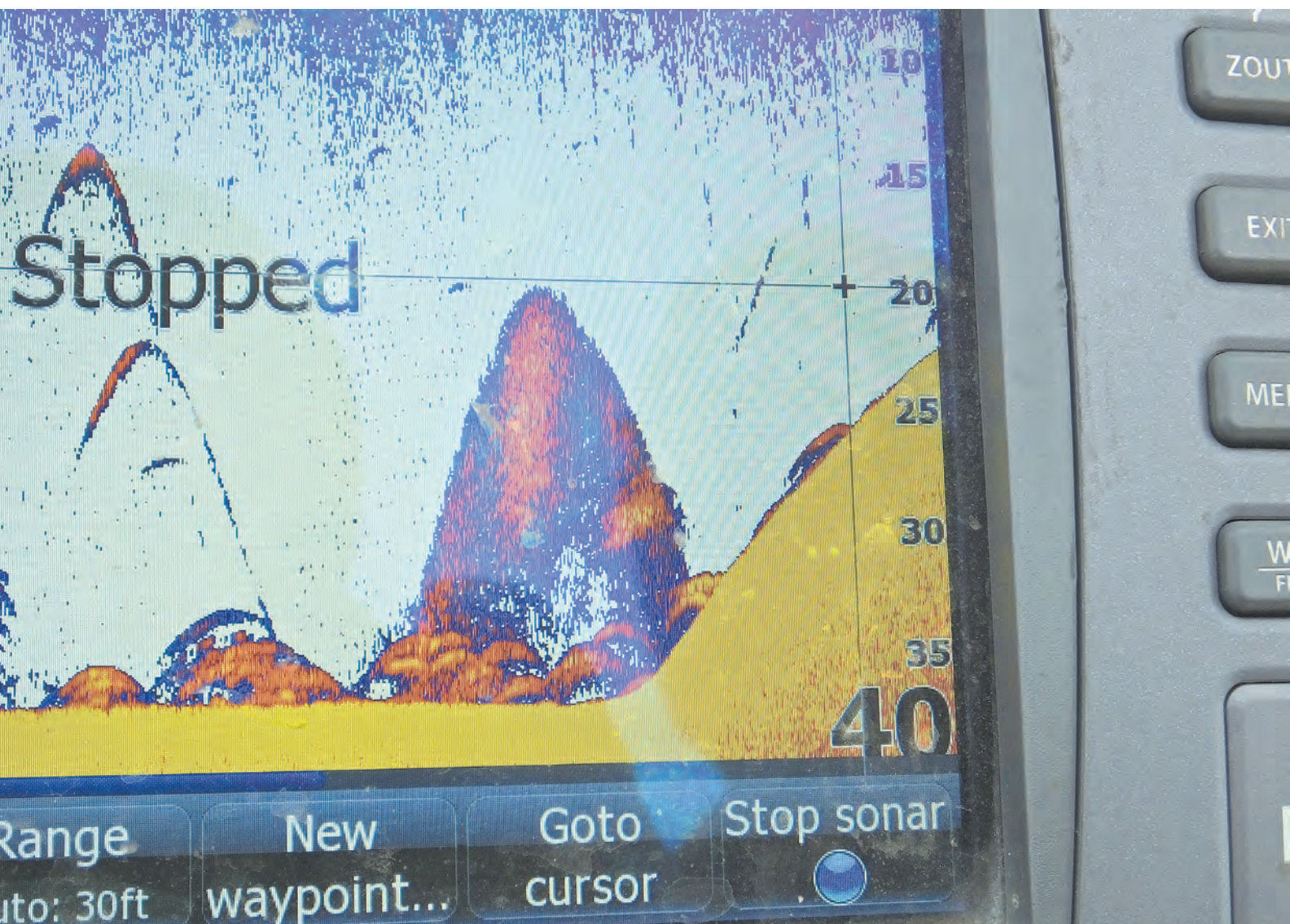
Another anchor-first catfisherman is Spencer Hodges from Winterville, NC. A professional guide and tournament fisherman, he loves to anchor down for big catfish.

Hodges (336-469-0177, Purrfect Kitty Guide Service) fishes multiple lakes and rivers and is a professional guide on the James River in Virginia and the Santee Cooper lakes in South Carolina.

His favorite targets have the common connection of including underwater topographic changes. Points, humps, ledges and channel junctions are among preferred places.

Hodges said he’ll study the topographic maps on his graph to pinpoint potential hotspots before he gets on the water.

“I fish specific feeding-area targets. But I will identify travel routes that catfish utilize to migrate to those areas,” he said. “It may be a long point in a feeder creek, or a ditch coursing through a flat. A creek running from deeper water leading to



Jeff Manning caught these blues in the back of a creek where forage was concentrated. **OPPOSITE PAGE:** Manning points to a 'saddle' as a productive winter setup when anchored down for blue catfish.

a shallow flat where a mussel bed or other forage exists is a favored target.”

Hodges said he’s hunting actively feeding catfish so the presence of forage is essential.

“I’m going to anchor where I expect catfish to eat,” he said. “The depth may be deep, shallow or somewhere in between. Feeding fish are moving, so an anchored setup with multiple rigs fan cast around the boat is ideal.

Hodges said he’ll identify where to set up along a travel route. Another likely spot is what he refers to as a “pinch point,” effectively a narrow portion of the travel route, or funnel.

“Big catfish travel along identifiable routes such as creeks and ledges,” he said. “When I find a pinch point along that travel route I can set up with confidence that catfish will have to swim close to my baits as they funnel to the feeding area,” he said.

FOCUS ON THE HOT SPOTS >



Terry Madewell

MIRRODINE *NEW additions*

**C-EYE PRO SERIES MINI DINE
SUSPENDING TWITCHBAIT
CS14MR**

AVAILABLE IN PILCHARD, PINFISH, SHAD AND MULLET.



2 1/4"
3/16 OZ.

**HEAVY DINE XL
SINKING TWITCHBAIT
28MR**

AVAILABLE IN 16 COLORS.



3 1/8"
7/16 OZ.

SHOPMIRROLURE.COM

ORIGINAL **Mirrolure**

@ MIRROLURE_OFFICIAL

FOCUS ON THE HOT SPOTS

"I track where bites come from and if I catch multiple fish from the same area, I'll put more rigs on that specific target," he said. "Catfish may congregate in a relatively small area when feeding."

"And I believe I do catch more big fish from anchored setups than drifting," he said. "These same fish-finding and anchoring principles apply to fishing rivers for big catfish too. Deep holes and current are prime factors when fishing moving water."

Proper anchoring is crucial to success. Hodges and Manning both employ the two-anchor method. They securely anchor off the bow and stern, into the wind, to hold the boat steady.

"I want the boat stable so I can fish specific areas where I've marked fish," Hodges said. "I like to fish in windy conditions and the boat may sway a little. But a good two-anchor setup allows me to fish effectively."

Hodges said the fishing action may occur in flurries and it's not unusual to have multiple fish hooked at one time, often followed by a lull. If the lull becomes lengthy, he'll pull anchors and set up again.

"I may only need to move a short distance to find more feeding fish and we're back in business," he said. "Productive anchor fishing requires effort. I may pull anchor and set up on another target a dozen or more times in a day, based on fishing action."

Fishing from an anchored position is only part of the overall catfish-catching strategy for both Manning and Hodges. They're excellent drift fishermen and they drift when that's the best tactic. But their favored method for big blue catfish is anchoring. And they employ a fine-tuned strategy to locate the right spot to anchor down. And at the end of the day these pros know they'll usually catch more, and bigger, catfish by anchoring. ■



Spencer Hodges trusts his graph to help him find the right setup to anchor.

Terry Madewell



WE HAVE 2 LOCATIONS IN THE CAROLINAS!

3333 NC-16 BUSINESS, DENVER, NC 28037

18919 W. CATAWBA AVE, CORNELIUS, NC 28031

CALL US TODAY AT 704-483-2628 www.edwatkinsmarine.com



NEW & PRE OWNED BOAT SALES / CONSIGNMENT / SERVICE / PARTS



SEA PRO

STINGRAY Boats

Ranger Boats

G3 Boats

SunCatcher

INTIMIDATOR

SUZUKI

YAMAHA

MERCURY

merCruiser

VOLVO PENTA

EVINRUDE

Anchor down for chilly water blues

Rigging and bait selection are important, and using bait from the waters fished is a good strategy.

BAIT AND RIGS ARE CRUCIAL

Manning said bait is crucial to success and he'll do his due diligence and use small and large chunks of bait. But he's convinced that big baits consistently produce bigger catfish.

"I've caught big blues on small strips of perch or shad," he said. "But I don't believe that if a big blue catfish swims by my live, eight-inch white perch that it thinks 'Naw, I'm gonna eat light today.' A catfish doesn't have human thought processes. They simply find forage and eat it."

Both Manning and Hodges rely heavily on baits found in the waters they're fishing. White perch and gizzard shad are prime baits for both anglers during the winter. Other baits work well depending on the lake being fished.

Both anglers prefer 7- to 8-foot rods and baitcasting reels loaded with line appropriate to the size of fish targeted, usually in the 50-pound test range. They use 2- to 3-ounce sinkers depending on depth fished, and prefer 8/0 to 10/0 hooks at the terminal end of a 2- to 3-foot leader. ■



Terry Madewell of Ridgeway, S.C., has been an outdoors writer for more than 30 years. He has a degree in wildlife and fisheries management and has a long career as a professional wildlife biologist/natural resources manager.

SANTEE STRINGER >



Terry Madewell



**ON A TRAILER OR LIFT...
WE KEEP YOU COVERED!**



**REMOVABLE
SAND BAG
WEIGHTS
AVAILABLE**

1-800-334-8277
2330 Womble-Brooks Rd.
Wilson, NC 27893



Guide Bobby Winters hunts catfish in multiple depths during November.



Terry Madewell

BIG FISH TIME

IT'S TIME TO CATCH A SANTEE COOPER TROPHY

As the weather cools and water temperatures fall, big fish of various species get into predictable patterns. One vastly overlooked resource for November is the incredible big catfish action in multiple depths of water. Crappie action perks up on deep-water brush and it's time to set the table with slabs.

TROPHY CATS

After a summer of feasting, the fat cats of both lakes Marion and Moultrie get on an excellent bite pattern during November. Typically, some of the largest catfish of the year are taken this month. And the water depths can vary from deep to skinny water.

The most popular method during November is drift-fishing with the Santee Rig. And fishermen generally target areas where forage is abundant.

Bobby Winters, a full-time catfish and striper guide out of Blacks Camp, focuses on big catfish in November.

Winters (843-751-3080) said catfish are fat from feasting on forage all fall because the lakes are loaded with multiple types of chow. With the water temperatures now falling, the forage begins to pack up into well-defined pods.

"The idea is to find concentrations of these pods of forage along underwater topographic changes," Winters said. "I'll use my graph and search these targets to find areas where big fish are congregated. And that's where I focus my fishing effort."

Winters said most of the catfish he targets are taken by drift fishing. He recommends a drift rate of around .5 miles per hour. This enables him to cover ample water to put the bait in front of multiple good catfish on a given day.

"Don't get locked in to a specific depth,"

he said. "As the forage moves, so do the catfish. And the depth range can vary between 20 to 50 feet deep, depending on the specific area fished. Catfish can get on a similar depth and bait pattern for a few consecutive days in November, but that can change quickly."

Winters said his experience has shown deeper water generally produces more consistent big fish action in November.

"But don't overlook shallower water," he said. "Sometimes I'll drift over humps or ledges that are quite shallow and hook big catfish. I don't get locked into a single line of thinking in November. I keep my options open for best results."



Terry Madewell, of Ridgeway, S.C., has been an outdoors writer for more than 30 years. He has a degree in wildlife and fisheries management and has a long career as a professional wildlife biologist/natural resources manager.

FINE FISHING:

With many sportsmen spending more time hunting this month, anglers have fewer boats to compete against. Pleasure boaters have mainly winterized their boats, and PWC riders and water skiers are gone until at least late spring. It's a fine time to be on the Santee Cooper lakes where the fishing is great and the weather is (usually) still not too cold to comfortably enjoy being on the water.

Dave Hilton and clients show off a big stringer of slabs from lake Mairon.



Best baits include white perch, gizzard shad and chunks of blueback herring, he said. He'll experiment daily to find the best catfish bait on a given day.

Winters said he'll use six to eight rods on a drift. And it's not unusual to have multiple hookups.

"I like to fish underwater drops, ledges and high spots," he said. "We'll typically catch fish at a steady pace. But when we drift over a big school of shad, it's common to have multiple hookups."

SLAB CRAPPIE

From late October through mid-December, crappie anglers can enjoy the best opportunities to take slab crappies since the spring pre-spawn or spawn fishing. The key is underwater woody cover from the mid-depths to deep water.

Crappie guide Dave Hilton said most of the slabs will orient to woody cover along the drops and ledges. Hilton keeps scores of brush piles activated in both lakes Marion and Moultrie. And those are his prime targets during November.

"Weather is a determining factor regarding which lake I fish," he said. "Wind is the major factor because I need to tight line vertically over specific targets for best results. So boat control is key to my success. Most days I'll fish Lake Marion, often out of Bells Marina and I have lots of crappie targets in that area. But if the wind direction is wrong and blowing strong, I'll move to Lake Moultrie."

Hilton (843-870-4734) seeks woody cover in 15 to 35 feet of water and fishes brush, logs and stumps with live bait or jigs. "Specific depth varies with the water temperature. Usually the crappie will be shallower early in November and gradually move deeper as the water cools," he said. "But the depth on a given day can be crucial. I experiment until I find that depth, then focus on that depth."

Hilton typically fishes minnows over the top and along the edges of sunken brush. If he doesn't catch fish quickly, he'll move to another target.

"The November crappie bite is strong. It's just a matter of finding cover in the right depth on a given day," he said. ■

LAKE MOULTRIE BLUES >

An advertisement for Santee Cooper's Sparkleberry Swamp. The top section has a blue background with yellow and white text: "SANTEE COOPER'S SPARKLEBERRY SWAMP IS 16,000 ACRES OF WATERWAYS WITH CYPRESS CANOPY! CALL US FOR YOUR NEXT ADVENTURE!". Below this is a map of the swamp area with three callout boxes: "Sparkleberry Landing" with a kayak icon, "Low Falls Landing" with a boat icon, and "Pack's Landing" with a boat icon. A large, detailed image of a crappie fish is shown in the center, with a red starburst graphic next to it that says "CRAPPIE FISHING HOT SPOTS!". At the bottom, there is a logo for "SANTEE COOPER COUNTRY" and contact information: "CALL FOR OUR TRAVEL GUIDE 803-854-2131 FOLLOW US ON f FISHSANTEE COOPERCOUNTRY.COM".



LOWER LAKE BLUES

Drifting for Lake Moultrie's blue catfish

By Brian Cope

Santee's Lower Lake is a hotspot for catfish all year long, and this month is no exception. Capt. Charles King with Capt. KingFish Charters (843-296-1083) said drifting with cut bait is one of the most productive ways to catch the lake's blue catfish.

"Drifting covers lots of water quickly. It puts your bait in front of a lot of catfish that are hunkered down gorging on bait," he said.

King said it also allows anglers to cover every depth, with their baits dragging along the bottom, going down into the deeper holes, coming back up on humps, then back down again.

No matter how shallow or how deep the water is, your baits will drag along the bottom when your boat is drifting.

"It's a great tactic for covering different depths. This time of year, these fish could be at any depth, and it changes daily, and even throughout the same day based on conditions," he said. "Toward the end of this month, most of the fish I catch will be 40 to 60 feet deep."

King said anglers can drift no matter what the wind is doing.

"The wind can really get to whipping here, and on some days it can be completely still. I like a little bit of wind – enough to help push the boat along. On really windy days, drift socks slow the boat and help keep you on course. You can use one, two, three drift socks. It all depends on how strong the wind is, and how much you need to slow down," he said. "But unless you're in truly

Charles King of Capt. KingFish Charters said drifting, also called dragging, is highly effective on Santee's Lower Lake this time of year.

Brian Cope

dangerous wind, you can fish just fine.

NO WIND, NO WORRIES

And when the wind isn't blowing at all, King will crank his outboard, put his pontoon in reverse, and use his motor to slowly creep across the surface, pulling baits with rods placed in rod holders on the front and sides of his boat.

"That works just as well. And you can still use drift socks while running the outboard to help the boat run in as straight a line as possible," he said.

King said anglers can expect to catch catfish in a wide range of sizes when fishing like this during November.

"We catch plenty of them that run anywhere from 5 pounds to 25 pounds, and some days we'll get into some much bigger. A lot of 40, 50, even 60-plus pound blues are caught like this."

No matter what the weather is doing, King's anglers stay plenty comfortable thanks to his boat's full enclosure with a heater inside.

"Some of the best fishing comes during the worst weather. So it's good to have equipment that allows you to stay on the water during those times," he said. ■

CLARKS HILL STRIPERS ➤



HIT THE HILL FOR STRIPERS

Clarks Hill stripers and hybrids bite strong this month

Corey Mize Hunt caught this striper while fishing with Eddie Mason of Mason's Guide Service.

F By Brian Cope

or fishing guide Eddie Mason of Modoc, S.C., November brings sweet relief from heat, and also an improved bite from stripers and hybrids.

"We catch stripers and hybrids all summer and early fall. But we get a lot of them early in the morning before the sun gets up. But in November, we can catch them all day long," said Mason (masonguideservice.com).

One thing that doesn't change is Mason's fishing strategy.

"Fishing live bait on down lines is the way to go, no matter what month it is," he said.

The only thing that does change is where he finds the fish. That changes from week to week, and even from one day to the next. And that's true in any month.

The trick, Mason said, is to stay on them day after day.

"When you fish several times a week, you will notice their subtle changes and how they move little by little to different parts of the lake. These are multiple schools of fish — some are really big schools. And they'll come through in waves constantly looking for baitfish," he said.

Mason (706-829-0428) has rod holders mounted all around both sides, the front and the back of his boat. He'll watch his electronics until he sees the fish, or at least a school of bait, and

he'll bait up his rods, lower the bait to the proper depth, put the rods in rod holders, and wait.

Usually within a few minutes, he's got at least one rod doubled over. More on some days. But on slow days, he'll give it 15 minutes. If he hasn't boated one by then, he'll reel everything in, move to another spot, then repeat the process.

KEEP IT FRESH

"They don't have any favorite specific locations. They're mostly just following bait. So each day is a little different," he said.

In his decades of fishing, one thing has definitely changed for the better according to Mason. Years ago, he had to drop an anchor at every spot he wanted to fish. This was time-consuming and labor intensive. Now he just hits the Spot Lock feature on his trolling motor, which keeps his boat in place as long as he wants.

One mistake Mason said many anglers make is using the same bait for too long.

"These fish want the freshest bait possible. If a fish hits your bait but you don't hook it, reel in and put a fresh bait on," he said.

"Even if your bait looks okay, it's probably not lively enough for the fish. Bait in your bait tank does you no good if you're not using it. Fresh bait is the key to catching these fish, so don't be stingy with it." ■

Big stripers are commonly caught by jigging and trolling on Gaston this month.



Zakk Royce

STRIPERS ON GASTON

Jigging, trolling are key methods

M By Dusty Wilson
 assive schools of threadfin shad bunch together on Lake Gaston over deeper water, attracting attention from hungry stripers working as a team to bust the bait balls. Guide Zakk Royce of Gasburg, VA will either troll or jig the schools that can be easily found with the arrival of nature's fish finder — seagulls.

"Fishing gets a lot easier when the seagulls show up," said Royce (919-724-2474), who runs Blues Brothers Catfish Guide Service. "When you see them diving, you want to get there as quick as you can because active stripers are chasing bait to the surface. But, even if they're just sitting, a big congregation of gulls means that something has just happened or is happening on a regular basis."

Royce notes that stripers are mainly attracted to the large bait schools and that the underwater structure is of little importance. But, a prime location is the lower end of the lake, on the main body and major creek arms. This is where shad will sink down and spend the winter in deeper water.

"They're moving all the time," said Royce. "You won't necessarily catch them in the same place two days in a row. But, all the best

fishing will be around the birds. You just have to figure out the depth of the fish. That's when your fishfinder is important. They may be down 10 to 15 feet over 60 feet of water or down to 30 to 40. They could be near the surface. But, they will be close to where you're marking bait.

JIGGING AND TROLLING

Royce said the fishing is usually good enough not to need live or cut bait. Vertically jigging spoons and flukes is an effective method for a particularly large school with a well established depth. But Royce prefers to troll to cover more water. An umbrella rig is his go-to bait. Not only does it make a large and visible presentation, but it also mimics the bait balls the stripers are chasing. Between 2 and 3 mph, he trolls through the birds, trying to place the rig's depth slightly above any fish he is marking.

"I like Captain Mack's umbrella rig," said Royce. "I use a 2- to 3-ounce model for trolling. The different rigs carry between five and nine baits and I prefer to stick with natural shad colors for the swimbaits. It's definitely the best way to find the fish. But if I get over a big pod, I'll drop down a ½-ounce Hopkins spoon in a silver or shad color." ■

HICKORY STRIPERS

catch fire as water cools down

C By Tony Garitta
 olt Bass of Colt Bass Fishing said some of the best
 striper fishing at Lake Hickory takes place when
 the cooler weather lowers water temperatures.

"The ideal water temperature ranges from 60 to 75 degrees," said Bass (www.coltbassfishing.com). "The fish will feed to fatten up for the winter months."

Bass said once the water temperature drops into the 40s, the striper bite slows.

Hickory stripers generally run from 7 to 9 pounds. But Bass said some over 20 pounds have been taken during November.

Bass usually focuses on the lower end of the lake, where stripers linger in 5 to 35 feet of water around points, sandbars, rock shoals and humps. These structural features can be found with today's side-scan sonar units.

Bass favors places that offer quick access to deep water. When forage is in the area as well, stripers move up to feed.

If he doesn't know the precise location of the fish, he trolls bucktails on downriggers and leadcore lines off the sides and back of his boat.

He sets out a spread of four 7-foot medium Ugly Stik down rods holding Abu Garcia 6500 reels filled with 20-pound Berkley Big Game line. The rods are mounted horizontally in rod holders with lines coming off the sides of his boat.

The Carolina-style rigs are weighted with ½- to 2-ounce sinkers dictated by the strength of the wind and current with leaders of 17-pound fluorocarbon line. They're completed with No. 1/0 to 4/0 circle hooks based upon the size of the bait.

"The hook size shouldn't make the baitfish nose-dive unnaturally," said Bass.

He favors 4- to 7-inch shad and herring. With the cold water, he doesn't have to fret with constant bait changes since the baits remain lively for about an hour.

He completes his spread with four additional rods, positioned vertically in rod holders, using unweighted free lines with circle hooks. Some lines may be connected to Original Clear planer boards running out from the sides of the boat.

The depth of the planer board lines is determined by the length of line let out before clipping on the planer board. The more the line, the deeper the bait. And the less line, the shallower the bait.

The spread covers the water column from just beneath the surface to as deep as the stripers viewed on his electronics.

Bass avoids muddy water and cautions that stripers move constantly, so don't commit to a spot or two. ■

LUNKER LINES ▸

Hickory's best striper bite happens when the water temperature ranges between 60 and 75 degrees.



Creeks with the right water depths and flow can be ideal for catching bass this month.



TIME TO COVER LOTS OF WATER

USE CRANKBAITS TO SEARCH FOR FALL BASS

You can come up with a lot of good reasons to take your bass boat to the lake in November. But one especially stands out: a lot of people are hunting, and most of the jet skis and ski boats are gone. You can get back to the old days of fishing.

Now, that's not the only reason, even if it's a great one. Building on that is the fact that those guys sitting in deer stands are missing out on some great fishing, because the water is cooling, the days are getting shorter and fish are feeding up before the winter arrives.

November is sort of like October, in that it's a month when fishing depends a lot on the weather. It can be a split month if it gets cold early. The first half can fish like fall and the second half like winter. But that's unusual. Typically, it's a great

time to put your trolling motor down and go looking.

Generally, fish are in transition. They are either moving deeper or shallower, and in most lakes in the Carolinas – at least in North Carolina – they are moving shallow. They will get on rocks and wood, and the combination of the two is great. But the real key is being close to deep water. Riprap starts to get productive. Rocky points get good and channel swings are excellent.

Your deep fish are going to be near the mouths of creeks or on the main lake, and it's hit-and-miss fishing, with either a jig or jigging spoon. That's one reason I like to stay well into creeks this month. Some fish, I've found, like to overwinter in the creeks and never move back to the main lake.

LOOK DEEP

Many of our lakes have plenty of tributary creeks. So it's a matter of making the right choice. Listen to the locals about which creeks are good in fall. You want to fish a creek with a deep channel – not a 2- to 3-foot channel, but a creek that really drops off into the channel. You want 10 or 15 feet of water in the channel as you get to the back of the creek. That's because the baitfish will get in those kinds of creeks. Those creeks usually have a lot of water flow.



David Fritts is a 63-year-old pro bass fisherman from Lexington, N.C. He won the 1993 Bassmasters Classic championship and the 1997 FLW Tour Championship, and he was the 1994 BASS Angler of the Year. He is sponsored by Ranger boats, Lews, Lowrance, Power Pole and Berkley.

On High Rock Lake, Abbotts Creek has a 10-foot channel in the back. On Lake Norman, it's Mountain Creek. On Wylie, it's the South Fork and Catawba Creek. At Buggs Island, you can get bit in Nutbush, but Grassy Creek is better. Butcher Creek is just as good, and Bluestone may be my favorite. It's overlooked, and it holds a lot of big fish.

Once you've decided on a creek, the No. 1 key is being close to deep water – not necessarily in it, but close to it. Most fish will be up.

LOOK SHALLOW

By November, you're going to be fishing 10 feet or shallower. Fish will get on channel breaks back in the creeks, or on shallow channel bends. You're looking to fish places that are 5 or 6 feet deep, with the water falling into 10 feet.

If you get some cold-weather days, rocks will warm up better and fish will get on them. Stump rows along channel bends or drops are even better; fish love them in November.

This month, I'll be hunting for them with my baits – old school. November is a month when you can do that, because a lot of times fish will be tight on the bottom, under a stump, in places where you can't see 'em as well with your electronics. That helps us old guys who are used to trying to find fish with our baits.

Keep in mind that a lot of times as the water cools, fish may be sluggish. You've gotta coax them into biting. You have to adjust to the color of the water and them being sluggish – how you wind your baits back in. And November isn't like the pre-spawn and post-spawn when you can catch five on one stump.

There can be three or four here and there, but not loaded up on any place.

Since these fish are fairly shallow, you can get to them with a Frittside or a Berkley SquareBull. I really like the Frittside Biggun', a 3-inch bait that will run 6-feet deep – a real sleeper. I'll always have a couple of other crankbaits tied on: a Dredger 10.5 or 8.5. It is pretty hard to beat the honey shad color in the fall. Kentucky blue is right behind it. If you get a little bit of colored water, crawdad colors are good, and char-treuse/brown back.

The fall is a great time to fish a crankbait; it's been my most-successful time as a pro fisherman. Too bad we don't have any tournaments in the fall anymore. You cover a lot of water, and once you get dialed in, they're easy to catch on a crankbait. I'm not as concerned with getting baits deep. So I don't have to make the extremely long casts I need in the summer.

I will back off and use a shorter rod, because I'm throwing more at targets: laydowns and stumps you can see. My 6-foot-8 Lew's David Fritts crankin' rod is a more accurate way to present your baits. I fish a Lew's BB-1 reel – get the slowest retrieve ratio you can; 6.2-to-1 is great. I fish 10-pound Berkley Sensation, a mono that doesn't have a lot of stretch and is perfect for fishing crankbaits. ■

STILL USING MONO:

With all the super, no-stretch fishing lines available, pro angler David Fritts still prefers monofilament when fishing with crankbaits. Berkley's Sensation is a low-stretch version that has just enough stretch to allow bass to hook themselves without yanking the crankbait free.

LAKE RUSSELL SPOTTED BASS ➤

ONE-STOP BOATING

FULL SERVICE MARINA ON THE WATER!

SUPPLIES • SERVICE • SALES













BAIT & TACKLE HEADQUARTERS

TIDELINE MARINE

JACKSONVILLE, NC
910-455-2979 • TIDELINEMARINE.COM





Wendell Wilson shows off a nice Lake Russell spotted bass.



Wendell Wilson

SPOTTED BASS FURY

Bass bonanza at Lake Russell

T By Pat Robertson
 he economy may be slipping, but veteran guide Wendell Wilson of Elberton, GA, predicts the spotted bass in Lake Russell will be booming in November.

“The last few years November has been one of the best months of the year, if not the best, to catch Russell’s spotted bass,” said Wilson (<http://www.wilsonsguideservice.com/>). “That’s when they start ganging up around the schools of baitfish in the creeks and sometimes in the large coves off the main lake.”

The best way to target the spotted bass is to get in water about 30 feet deep and look for schools of threadfin shad close to the bottom, he said. The spots will be there, too, feeding on the shad. There usually will be a good mixture of white and yellow perch with the bass, he added.

The go-to technique, Wilson said, is to use a drop-shot rig baited with live medium shiner minnows.

SPOONS, WORMS ALSO GOOD

“You can also jig a spoon or rig a drop shot with a 4-inch green worm, but you won’t catch nearly as many as you will with the live minnows,” Wilson said. “If they are biting good you don’t have to let it sit very long. If it sits for 30 seconds to a minute, just lift the rod and let it drop back down. The fish will see the movement and come check it out.”

If the spotted bass bite this November like they have in recent years, it can make for some phenomenal fishing days, Wilson said.

“We have had some days when we caught 60 to 70 bass in one area doing that in November,” he said. ■

We see sunshine, blue skies
and big fish in your future.

SANTEE COOPER LAKES



FISH WHERE THE PROS DO.

*"It's unbelievable.
This place has got it."*

*– Bassmaster Elite
Series Angler, Luke Palmer*

*"I've been here a long
time. It's very meaningful
to win here."*

*– Major League Fishing Toyota
Series Winner, Bryan Cook*

Visit Clarendon County today.
(803) 435-4405

www.CarolinaSportsman.com



www.clarendoncounty.com



HUNTING/FISHING SCRAPBOOK

Will Lansinger was fishing with friends under the Strawberry Moon at Isle of Palms, SC when he landed this shark.



Will Lansinger



Chandler Baker

While fishing with her dad at the Atlantic Beach bridge, Chandler Baker caught this 9.14-pound sheepshead.



Chad Parker

Chad Parker caught this nice flathead catfish on the Pee Dee River.



Kaleigh McMichael

Kaleigh McMichael caught and released this nice channel catfish at the Wild Buc Ranch in Reidsville, NC on May 22.



Dallas Brooks

Dallas Brooks caught and released this flounder on a trip to Carolina Beach using a live finger mullet for bait in late June.

Take your camera **TO THE WOODS!**

Send us your photos, and you may appear on the pages of the most widely read outdoor magazine in the Carolinas. Send clean, sharp shots of you with your deer, ducks, rabbits, squirrels, doves, etc. to

images@CarolinaSportsman.com

Digital images must be at least 500KB and in jpeg format.



Jesse Bowen caught this Arkansas blue catfish in the Wateree River just below the dam.



Jasmine Cross caught this 31-pound blue catfish on North Carolina's Yadkin River in late July.



Bobby Jones of Raleigh, N.C. was fishing Falls Lake on April 17 when he caught this nice bass.



Weston Williams caught and released this 6-pound, 11-ounce bass while fishing at Jordan Lake.



Christopher Eatman, 10-years-old of Bath, NC, was using a live croaker from shore when he caught this speckled trout.



HUNTING/FISHING SCRAPBOOK

GOT PHOTOS? WE WANT 'EM

Send us your photos, and you may appear on the pages of Carolina Sportsman magazine. Send clean, sharp shots of you with your fish, deer, ducks, rabbits, squirrels, doves, etc. to

images@CarolinaSportsman.com

Digital images must be at least 500KB and in jpeg format.



Brantley Perez

A June fishing trip produced this nice bass for youth angler Brantley Perez of Carthage, N.C.



Holden Filyaw

Holden Filyaw caught this 5.6-pound bass - his personal best - on Lynch's River in July.



Tony Thompson

Tony Thompson of Columbia, S.C. caught this catfish on Memorial Day on the Wateree River just below the dam.



Tom Christofaro

Tom Christofaro of Camden, S.C. caught these bass and a pile more on Lake Murray in mid-August.



Lisa Adams

Lisa Adams caught this speckled trout while fishing on the Pamlico River in August.

Jenn Cabbage of Camden, SC was surf fishing at Hunting Island in July when she landed this bull redfish.



Jenn Cabbage



Brooke Kimball

Brooke Kimball caught this chunky bass in mid-August during an evening outing in Carthage, N.C.



Dawson McCaskill

Dawson McCaskill of Camden, SC caught this nice bass in July.



Andy Till

Andy Till caught this 52-pound blue catfish at Lake Murray over the summer.



Jacob Esancy

While fishing in Pickens County, SC, Jacob Esancy landed this nice bass.



Easton Porter

Easton Porter was fishing with Captain J Hook Charters out of Charleston when she caught this speckled trout.

2022-2023 SOUTH CAROLINA HUNTING REGULATIONS

Not an official document.
Please refer to SCDNR's
Rules & Regulations Digest.

HUNTING SEASONS

SPECIES	SEASON DATES (PRIVATE LAND)	BAG LIMIT	POSSESSION LIMIT
Doves	Sept. 3-Sept. 5, Sept. 6-Oct. 8 Nov. 12-26, Dec. 24-Jan. 31, 2023	15	45
Crow	Nov. 1-March 1, 2023	No limits	
Quail	Nov. 21-March 1, 2023	12	36
Rabbit	Nov. 24-March 1, 2023	5	15
Squirrel	Oct. 1-March 1, 2023	10	30
Fox	Nov. 24-March 1, 2023	No limits	
Grouse	Nov. 24-March 1, 2023 (Game Zone 1 only)	3	9
Raccoon	Sept. 15-March 15, 2023 (statewide)	3 raccoons per party	
Opossum	Sept. 15-March 15, 2023	No limits	
Other furbearers	Nov. 24-March 1, 2023 (bobcat, otter, weasel, mink, muskrat, skunk)	No limits	
Bear	Game Zone 1 Game Zone 2 (parts of Oconee, Pickens, Greenville, Spartanburg counties not in Game Zone 1) Game Zone 4 (Georgetown, Horry, Marion and Williamsburg counties)	Oct. 17-23 (still hunting only) Oct. 24-30 (dogs) Oct. 17-30 (still hunting only)	
Rails	Sept. 9-14, King & Clapper Sora & Virginia Gallinules (common/purple)	15 25 15	45 75 45
Snipe	Nov. 14 - Feb. 28, 2023	8	24
Woodcock	Dec. 18 - Jan. 31, 2023	3	9
Wild Turkey	March 22-April 30, 2023 (Game Zones 3&4) April 1-May 10, 2023 (Game Zones 1&2)	1 1	

DEER SEASON

ZONE	ARCHERY ONLY	PRIM WEAPON	GUNS
1		Oct. 1-10	Oct. 11-Jan. 1, 2023
2	Sept. 15-30	Oct. 1-10	Oct. 11-Jan. 1, 2023
3			Aug. 15-Jan. 1, 2023
4	Aug 15-31		Sept. 1-Jan. 1, 2023

Youth Days: Game Zone 1, Sept. 24, Jan. 7; Game Zone 2: Sept. 10, Jan. 7; Game Zone 3: Aug. 13, Jan. 7; Game Zone 4: Aug. 13, Jan. 7.

WATERFOWL SEASONS

SPECIES	DATES	BAG LIMIT
Duck	Teal only: Sept. 9-24 Nov. 19-26, Dec. 12-Jan. 31, 2023	6 6
Canada geese	Sept. 1-30, Nov. 19-26, Dec. 12-Jan. 31, 2023, Feb. 15-March 1, 2023	15 (Sept.) 5 (Others)
Blue/snow (light) geese	Nov. 19-26, Dec. 12-Jan. 31, 2023, Feb. 15-March 1, 2023	25
Brant	Dec. 13-Jan. 31, 2023	2
Sea ducks	Nov. 19-26, Dec. 12-Jan. 31, 2023	4
Mergansers	Nov. 19-26, Dec. 12-Jan. 31, 2023	5 (1 hooded)
Coots	Nov. 19-26, Dec. 12-Jan. 31, 2023	15

2022-2023 NORTH CAROLINA HUNTING REGULATIONS

Not an official document.
Refer to NCWRC's official
hunting regulations pamphlet
or www.ncwildlife.org.

HUNTING SEASONS

DEER

Western	Bowhunting	Sept. 10-Oct. 2 Oct. 16-Nov. 20 Dec. 11-Jan. 2, 2023 (bucks only)
	Muzzleloader	Oct. 3-15
	Gun	Nov. 21-Dec. 10
Northwestern	Archery	Sept. 10-Nov. 4
	Muzzleloader	Nov. 5-18
	Gun	Nov. 19-Jan. 2, 2023
Central	Bowhunting	Sept. 10-Oct. 28
	Muzzleloader	Oct. 29-Nov. 11
	Gun	Nov. 12-Jan. 2, 2023
Northeastern/ Southeastern	Bowhunting	Sept. 10-30.
	Muzzleloader	Oct. 1-14
	Gun	Oct. 15-Jan. 2, 2023

BEAR

Oct. 17-Nov. 19 & Dec. 12-Jan. 2, 2023:	In and west of Surry, Wilkes, Caldwell, Burke and Cleveland counties
Nov. 12-Jan. 2, 2023:	Alamance, Anson, Cabarrus, Caswell, Chatham, Davidson, Durham, Granville, Guilford, Lee, Mecklenburg, Montgomery, Orange, Person, Randolph, Rockingham, Rowan, Stanly, Union counties
Oct. 15-Jan. 2, 2023:	Franklin, Harnett, Hoke, Johnston, Moore, Richmond, Scotland, Vance, Warren, Wake counties
Nov. 19-Jan. 2, 2023:	Alexander, Catawba, Davie, Forsyth, Gaston, Iredell, Lincoln, Stokes, Yadkin counties
Nov. 14-Jan. 2, 2023:	Bladen, Brunswick, Carteret, Columbus, Cumberland, Duplin, New Hanover, Onslow, Pamlico, Pender, Robeson, Sampson counties
Nov. 12-27, Dec. 10-25:	Dare, Hyde, Tyrrell counties
Nov. 12-20, Dec. 10-25:	Beaufort, Bertie, Craven, Hertford, Jones, Martin, Washington counties
Nov. 11-20 Dec. 10-25:	Camden*, Chowan*, Currituck Gates, Pasquotank*, Perquimans (*Seasons open Nov. 12 by local laws)
Nov. 19-Dec. 18:	Edgecombe, Greene, Halifax, Lenoir, Nash, Northampton, Pitt, Wayne, Wilson counties

SQUIRREL

Oct. 17-Feb. 28, 2023 (gray & red)
Oct. 17-Jan. 31, 2023 (fox)

RABBIT

Oct. 17-Feb. 28, 2023

RACCOON, OPOSSUM

Oct. 17-Feb. 28, 2023

QUAIL

Nov. 19-Feb. 28, 2023

GROUSE

Oct. 17-Feb. 28, 2023

RAILS

Sept. 3-Nov. 23

COMMON SNIPE

Oct. 27-Feb. 28, 2023

CANADA GEESE

Resident zone, Oct. 21-29, Nov. 5-26,
Dec. 17-Feb. 11, 2023

Statewide: Sept. 1-30; NEZ, Dec. 28-Jan. 31, 2023 permit

SNOW, BLUE, ROSS GEESE

Oct. 11-Feb. 11, 2023, Feb. 13-March 31, 2023, permit

DUCKS

(Inland Zone)

Oct. 21-22, Nov. 5-26, Dec. 17-Jan. 31, 2023

(Coastal Zone)

Oct. 28-29, Nov. 5-26, Dec. 17-Jan. 31, 2023

EARLY TEAL

Sept. 13-30 (east of US 17 only)

SEA DUCKS

Oct. 28-29, Nov. 5-26, Dec. 17-Jan. 31, 2023

BRANT

Dec. 17-Jan. 31, 2023

DOVE

Sept. 3-Oct. 1, Nov. 5-26, Dec. 10-Jan. 31, 2023

TUNDRA SWAN

Nov. 5-Jan. 31, 2023. Bag limit 1, by permit only.

WOODCOCK

Dec. 10-Jan. 31, 2023

WILD TURKEY (Youth)

April 1-7, 2023

April 8-May 6, 2023

HOLIDAY SUBSCRIPTION SALE!



\$9.98
PER GIFT
BEST PRICE
OF THE YEAR!



Buy 1 subscription for \$19.95 (12 issues),
for yourself or a friend, and give additional gifts
at half price - that's just \$9.98 per gift.



Toll-free **800-538-4355**

*Promotion valid until January 1, 2023.
Please allow 4-6 weeks for delivery of
first issue.

Carolina **SPORTSMAN** **BACK ISSUES**



LIMITED QUANTITIES!
WHEN THEY'RE GONE,
THEY'RE GONE!

shop.sportsmannetwork.com/collections/carolina-sportsman



Astro Tables is far more effective than "moon tables," because it takes into account critical solar energies as well as lunar.

- The "Best Days" column is based on the ever-changing positions of the sun and the moon, rating each day on a scale of 0 to 100. The higher the number, the more solar/lunar influence that day is experiencing (see "Value" column or corresponding black bars).
- The two Primary periods (Moon Overhead and Moon Underfoot) vary in length from one hour to three-and-one-half hours, depending on a number of important lunar cycles, such as how close the moon is to the earth that day and how high its orbit is. The solar symbols alert you to when a Primary period overlaps a major solar period (eg: Dawn, High-Noon, and Dusk). The secondary periods of Moonrise and Moonset last about one hour each... 30 minutes before and after the listed time. (See key at bottom of each month for more detail.)

- **Astro Tables** is a quick-reference version of its parent publication, the **PrimeTimes Wall Calendar**, which is recommended for those wishing more complete data on the best days and times to go fishing and hunting for the entire year (see "Available Products" below).

- **PrimeTimes** forecasts are based on solar/lunar research at a leading college of astrophysics and our own research pond/wildlife area. Annual data is supplied by the U.S. Naval Observatory. All times are adjusted to the center of your time zone and for Daylight Saving Time.

AVAILABLE PRODUCTS:

The 2023 PrimeTimes Wall Calendar. \$13.95 (plus \$4 s&h). Know the best days, best times, and their relative strengths for all of 2023 with this information-packed, full-color, 11-inch by 17-inch, graphic peaks

and-valleys forecaster. Includes rise and set times for the sun and moon, space to log your catches, "Timely Tips," plus fish and game symbols showing you each month's don't-miss periods. Also includes exclusive summary charts revealing the best and worst days of 2023, the year's best periods, and look ahead at 2024, and more. Comes with FREE 2023 Astro Tables pocket calendar, which sells separately for \$8.95, plus \$3 s&h.

Book: "How to Know When to Go" by Rick Taylor. \$14.95 (plus \$4 s&h). 100 pages, 43 illustrations. A comprehensive look at the main factors influencing fish and game activity periods, plus how to devise an effective when-to-go game plan using any year's PrimeTimes calendars. Individual assessments of bass, panfish, deer, turkey, and more.

Ultimate PrimeTimes app for web and smartphone. 12 months. \$9.99

The world's best forecaster allows you to fine-tune the peak times to your exact location, quarry, and even weather. Too many features to list here. For more details, please call us or visit our web site (see below).

SPECIAL PACKAGE OFFERS:

- #1: **Wall Calendar, Astro Tables and "How to Know..." book.... \$19.95** (plus \$5 s&h).
- #2: **Same as #1, plus App...\$28.95** (plus \$6 s&h).
- #3: **Same as #2, minus book...\$22.95** (plus \$4 s&h).

Send to: PrimeTimes 2023 - Dept. LS - 2487 NW 75th Ave., Ste. 100 - Ankeny, IA 50023

For credit/debit card orders, call 515-964-5516, or go online to primetimes2.com and click **Catalog**.

BEST DAYS				
2022 NOV	POOR	FAIR	GOOD	VALUE
Tue 1	██	██	██	38
Wed 2	██	██	██	30
Thu 3	██	██	██	27
Fri 4	██	██	██	29
Sat 5	██	██	██	41
Sun 6	██	██	██	53
Mon 7	██	██	██	65
Tue 8	██	██	██	70
Wed 9	██	██	██	60
Thu 10	██	██	██	51
Fri 11	██	██	██	41
Sat 12	██	██	██	37

Sun 13	██	██	██	37
Mon 14	██	██	██	41
Tue 15	██	██	██	41
Wed 16	██	██	██	50
Thu 17	██	██	██	38
Fri 18	██	██	██	32
Sat 19	██	██	██	30

Sun 20	██	██	██	36
Mon 21	██	██	██	44
Tue 22	██	██	██	52
Wed 23	██	██	██	56
Thu 24	██	██	██	45
Fri 25	██	██	██	35
Sat 26	██	██	██	24

Sun 27	██	██	██	18
Mon 28	██	██	██	19
Tue 29	██	██	██	25
Wed 30	██	██	██	37

25 50 75
AVERAGE

LUNAR PERIODS						TIMES OCCURRING AT NIGHT ARE SHADED	
MOON RISE	PRIMARY MOON OVERHEAD	MOON SET	PRIMARY MOON UNDERFOOT				
2:54 pm	7:29 pm - 8:35 pm	12:06 am	7:05 am - 7:57 am	☾	☽	☾	Half
3:30 pm	8:13 pm - 9:35 pm	1:17 am	7:54 am - 9:00 am	☾	☽	☾	
4:01 pm	8:52 pm - 10:34 pm	2:27 am	8:38 am - 10:00 am	☾	☽	☾	
4:29 pm	9:26 pm - 11:32 pm	3:33 am	9:17 am - 10:59 am	☾	☽	☾	
4:56 pm	10:01 pm - 12:27 am	4:38 am	9:51 am - 11:57 am	☾	☽	☾	
4:23 pm	9:34 pm - 12:24 am	4:42 am	10:26 am - 12:52 pm	☾	☽	☾	End DST
4:52 pm	10:12 pm - 1:18 am	5:45 am	9:59 am - 12:49 pm	☾	☽	☾	
5:23 pm	10:52 pm - 2:14 am	6:48 am	10:37 am - 1:43 pm	☾	☽	☾	Full
5:59 pm	11:35 pm - Midnight	7:52 am	11:17 am - 2:39 pm	☾	☽	☾	
6:39 pm	Midnight - 3:11 am	8:54 am	12:00 pm - 3:36 pm	☾	☽	☾	
7:25 pm	12:23 am - 4:05 am	9:53 am	12:48 pm - 4:30 pm	☾	☽	☾	High
8:17 pm	1:13 am - 4:59 am	10:47 am	1:38 pm - 5:24 pm	☾	☽	☾	
9:13 pm	2:04 am - 5:50 am	11:35 am	2:29 pm - 6:15 pm	☾	☽	☾	
10:11 pm	2:57 am - 6:37 am	12:16 pm	3:22 pm - 7:02 pm	☾	☽	☾	Apogee
11:10 pm	3:50 am - 7:20 am	12:52 pm	4:15 pm - 7:45 pm	☾	☽	☾	
	4:43 am - 7:59 am	1:23 pm	5:08 pm - 8:24 pm	☾	☽	☾	Half
12:09 am	5:35 am - 8:35 am	1:51 pm	6:00 pm - 9:00 pm	☾	☽	☾	
1:08 am	6:26 am - 9:08 am	2:17 pm	6:51 pm - 9:33 pm	☾	☽	☾	
2:08 am	7:19 am - 9:41 am	2:43 pm	7:44 pm - 10:06 pm	☾	☽	☾	
3:10 am	8:15 am - 10:13 am	3:09 pm	8:40 pm - 10:38 pm	☾	☽	☾	
4:14 am	9:11 am - 10:49 am	3:38 pm	9:36 pm - 11:14 pm	☾	☽	☾	
5:22 am	10:11 am - 11:29 am	4:11 pm	10:36 pm - 11:54 pm	☾	☽	☾	
6:34 am	11:14 am - 12:16 pm	4:50 pm	11:39 pm - Midnight	☾	☽	☾	New
7:48 am	12:21 pm - 1:09 pm	5:38 pm	Midnight - 12:41 am	☾	☽	☾	
9:01 am	1:28 pm - 2:10 pm	6:35 pm	12:46 am - 1:34 am	☾	☽	☾	Perigee
10:08 am	2:33 pm - 3:15 pm	7:42 pm	1:53 am - 2:35 am	☾	☽	☾	Low
11:06 am	3:34 pm - 4:22 pm	8:55 pm	2:58 am - 3:40 am	☾	☽	☾	
11:53 am	4:26 pm - 5:28 pm	10:08 pm	3:59 am - 4:47 am	☾	☽	☾	
12:32 pm	5:12 pm - 6:30 pm	11:19 pm	4:51 am - 5:53 am	☾	☽	☾	
1:05 pm	5:52 pm - 7:30 pm		5:37 am - 6:55 am	☾	☽	☾	Half

ANY LUNAR PERIOD IS ENHANCED WHEN IT OVERLAPS A KEY SOLAR PERIOD. THE BEST OF THESE OVERLAPS ARE DESIGNATED BY THE SUN SYMBOLS:
☀ = DAWN ☀ = HIGH NOON ☀ = DUSK

WHILE THE LESSER MOONRISE AND -SET OVERLAPS (ABOUT 30 MIN. BEFORE AND AFTER THE LISTED TIME) ARE DESIGNATED BY BOLD BLACK TYPE.

For more, visit primetimes2.com

For more information and samples of PrimeTimes products, visit our web site: www.primetimes2.com

ADVERTISERS INDEX

ABYSS BATTERY	51	CENTRAL CAROLINA HABITAT SOLUTIONS	23	SANTEE COOPER COUNTRY	65
AGRI SUPPLY COMPANY	20	CHEROKEE RUN HUNTING LODGE	35	SUZUKI MOTOR OF AMERICA, INC.....	44, 45
AMSOIL - ROGER FARINA.....	53, 81	CLARENDON COUNTY CHAMBER OF COMMERCE	73	THE REEL OUTDOORS.....	57
BAREFOOT ARCHERY, INC.....	27	CLIMAX GENERAL STORE / BUFFALO RIDGE JERKY.....	9	TIDELINE MARINE	71
BARNETT CROSSBOWS	41	DOWN EAST HEARING CARE ASSOCIATES	3, 8	TWIN LAKES WHITETAILS	21
BLACK WIDOW DEER LURES, INC.....	23	ED WATKINS MARINE	63	XPRESS BY ALUMA-WELD, INC.....	2
BLACK'S CAMP	53	L & S BAIT COMPANY.....	61	YEAH RIGHT CHARTERS	81
BLUE WAVE BOATS	43	LAKE GASTON JET SKI, POWERSPORTS & MARINE.....	5		
BOST ARGO.....	39	M2S BIKES.....	11		
BQ GRILLS	32	MARINE WAREHOUSE	83		
CAPTAIN FROGGY'S CHARTERS.....	19	NICHOLS STORE, INC.	33		
CAROLINA BOAT CO.....	49	O'BRIAN TARPING SYSTEMS	63		
CAROLINA COMPOSITES, LLC	84	REALTREE OUTDOOR PRODUCTS	31		

Subscribe Today and SAVE 79

Sportsman Back Issues 80

WITH
**MARINE
WAREHOUSE
CENTER**



**YOU'LL BE SURE
TO ENJOY LIFE
ON THE WATER.**



With two boat dealerships serving the Willmington, NC and Charleston, SC area, we're your one-stop shop for all your marine needs. Visit us today to find everything you need to get out and enjoy the water!



TRAILERS



OUTBOARDS



ACCESSORIES



SERVICE

**CAROLINA
SKIFF**

**SUZUKI
MARINE**

910.799.1277

6921 Market St
Wilmington, NC



843.974.5353

3881 Savannah Hwy
Johns Island, SC

MARINEWAREHOUSECENTER.COM

220 BaySport Creek Cruising



For more information, go to PioneerBoats.com
or call 843-538-6604
or like us on Facebook at Pioneer Boats
for the latest available information.



Avenger



Born on the
Bayou of Louisiana,
Raised in the
Lowcountry of
South Carolina



For more information, go to
AvengerBayBoats.com
or call 843-538-6604
or like us on
Facebook at
Avenger Bay Boats
for the latest available information.



MODEL 2400

From The
Back Water
To The
Blue Water



For more information, go to
BullsBayBoats.com
or call 843-538-6604
or like us on
Facebook at
Bulls Bay Boats
for the latest available information.